

GEORGIA HIGHLANDS COLLEGE



Fact Book Academic Year 2013-2014

**Prepared by:
Office of Strategic Planning, Assessment and Accreditation
Georgia Highlands College
Rome, Georgia 30161**

Table of Contents

Introduction

GHC Quick Facts: 2013-2014
GHC Organizational Structure

General Information

Historical Highlights and Background
GHC Administrative Personnel
Former Presidents
Characteristics of the Institution and Mission Statement
Institutional Memberships and Accreditation
Affirmative Action/Non-discrimination Statement and Disability Services Complaints
GHC Foundation & Alumni Officers and Chapter Presidents, 2013-2014

Student Data

Georgia Highlands College Five-Year Enrollment Profile
Enrollment by Campus
Application Information for Fall 2013
First Year Retention Rates
Graduation Rates
Transfer Rates
Enrollment by Self-Declared Ethnic Group
Campus Enrollment by Self-Declared Ethnic Group
Enrollment by Gender
Campus Enrollment by Gender
Enrollment by Average Age
Campus Enrollment by Average Age
Full-Time (FT) & Part-Time (PT) Enrollment and Semester Hours
Fall Enrollment of Current Students by Classification
Fall Enrollment of New Students by Classification
Total Enrollment by County of Residence
Top 20 Feeder High Schools
Average Composite Scholastic Assessment Test (SAT) Scores for Entering Freshmen
Academic Success Enrollment by Type of Courses
Academic Success Enrollment by Number of Courses

Academic Programs

Degree Programs
Most Popular Majors by Campus
Enrollment by Program of Study
Graduates by Degree and Program of Study

Credit Hours

Credit Hours by Campus
Credit Hours by Division
Fall 2013 Credit Hours Taught by Full- and Part-Time Faculty
Library

Personnel Data

Human Resources
Full-Time Faculty Information
Part-Time Faculty Information

Academic Success and eLearning

Enrollment in Academic Success Courses
Tutorial Center
Assessment Center
Academic Advising
eLearning

Student Affairs

Student Support Services
Office of Admissions, Registrar, and Financial Aid
Student Life
Intramural Sports Program
Athletics

Information Technology

Information Technology Division
Client Support Services
Network Support Services
Enterprise Application Services
Audio Visual Services

Financial and Physical Plant

Financial Data
Physical Plant Data
Campus Facilities
Campus Safety Data

GEORGIA HIGHLANDS COLLEGE



The 2013-2014 Georgia Highlands College Fact Book was compiled and edited by the Office of Strategic Planning, Assessment and Accreditation (SPAA).

If you have questions or comments, please contact SPAA at:

3175 Cedartown Hwy., SE
Rome, Georgia 30161
F-wing, F-126
Telephone: (706) 204-2368
Fax: (706) 204-2279

Dr. Laura Musselwhite
Director, Strategic Planning, Assessment and Accreditation
lmusselw@highlands.edu

Amanda West, Research Analyst
awest@highlands.edu

GHC Quick Facts: 2013-2014

Student Enrollment, Fall 2013			
Total Enrollment			5492
Enrollment by Campus (Duplicated)	Cartersville		2086
	Douglasville		521
	Floyd		1340
	Heritage Hall		246
	Marietta		1012
	Paulding		500
	Wellstar Facility		20
	eLearning (Web & DVD)		1374
Gender	Male	2012	38.3%
	Female	3391	61.7%
Race/Ethnicity	American Indian/Alaskan Native	17	0.3%
	Asian/Pacific Islander	92	1.7%
	Black(Non-Hispanic)	950	17.3%
	Hispanic	480	8.7%
	Multiracial	128	2.3%
	White (Non-Hispanic)	3804	69.3%
	Unknown	21	0.4%
Residency	Georgia	5342	97.3%
	Out of State	107	2.0%
	International	43	0.7%
Class	Freshmen	3313	60.3%
	Sophomore	1974	35.9%
	Transient	34	0.6%
	Joint Enrollment	115	2.1%
	Other	56	1.0%
Location (Duplicated Headcount)	Cartersville		2086
	Douglasville		521
	Floyd/Heritage Hall		1575
	Marietta		1043
	Paulding		500
	eLearning		1374
Full-Time/Part-Time	Full-Time	2840	51.8%
	Part-Time	2648	48.2%
Average SAT Scores First-Time Freshmen	Math	443	
	Verbal	450	
Average ACT Scores First-Time Freshmen	English	18	
	Reading	19	
	Math	18	
	Science	19	

GHC Quick Facts: 2013-2014 Continued

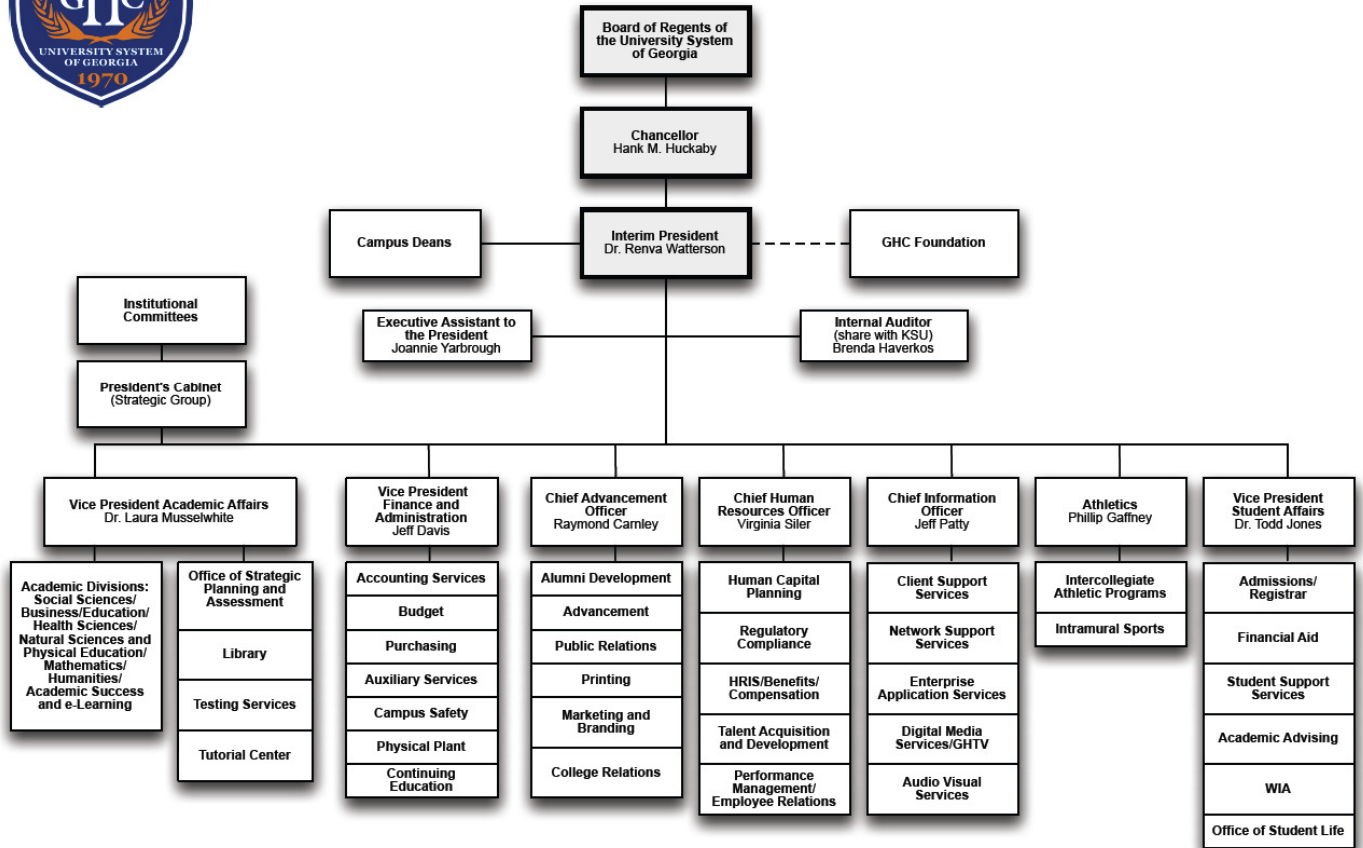
Faculty and Staff, Fall 2013			
Total Full-Time Faculty and Staff			329
Gender	Male	141	42.9%
	Female	188	57.1%
Race/Ethnicity	African American	35	10.2%
	Caucasian (White)	301	87.5%
	Asian	3	0.9%
	Hispanic	5	1.4%
	Unknown	0	0.0%
Part-Time Faculty			125
Full-Time Faculty			128
Additional GHC Statistics			
Student to Faculty Ratio, Fall 2013			1:22
Graduates for Academic Year 2013-2014			480
Retention Rate Fall 2011-Fall 2012 <i>(latest information available from USG)</i>	Full-Time	60.90%	
	Part-Time	50.19%	
Tuition Cost for Academic Year 2013-2014 (tuition cost per semester hour)	In-State	\$ 86.54	
	Out-of-State	\$327.40	
Transfers to Other USG Institutions by Fall 2011 <i>(latest information available from USG)</i>			770

Georgia Highlands College Organizational Structure 2013-2014



GEORGIA HIGHLANDS COLLEGE

Revised: 8/19/13



GENERAL INFORMATION

Historical Highlights and Background

- In 1968, the Board of Regents of the University System of Georgia authorized the establishment of Floyd Junior College in Floyd County; in December 1969, the Board of Regents appointed Dr. David B. McCorkle as the first president of the college.
- Initially, the Rome Chamber of Commerce provided the college with temporary facilities above their offices, but by November 1970, some business office operations moved to the Rome campus, and plant operations began when the maintenance building was approved that same month.
- In Spring Quarter 1971, a provisional student government organization began.
- In February 1971, a Continuing Education community service program was inaugurated to offer the public the opportunity to take short courses in special interest fields.
- The associate degree program in nursing began in fall quarter 1971 with an enrollment of nearly 100.
- In June 1972, the college graduated its first class of 47 students who received associate degrees.
- In December 1972, the college received initial accreditation. Reaffirmation of accreditation was achieved upon completion of self-study in 1976, 1986, 1996, and 2008.
- Effective September 1987, the Board of Regents mandated that neither the word “junior” nor “community” was to be used in the title of any college unit of the University System of Georgia. Thus, Floyd Junior College became Floyd College.
- Dr. David B. McCorkle retired on June 30, 1991, after 21 years of service as president of the college. Dr. Richard Trimble was appointed acting president of Floyd College and served until November 16, 1992 when Dr. H. Lynn Cundiff became the college's second President.
- In 1994, Floyd College continued its expansion and outreach by acquiring the East Rome Junior High School facility in downtown Rome. The college began offering classes in the building (now called Heritage Hall) winter quarter 1995. A portion of the facility is used to house a television studio through which academic classes are broadcast over local cable channels.
- Floyd College expanded to two new instructional sites at Cartersville and Acworth.
- In 2000, The Board of Regents allocated funding for architectural design of a new campus facility in Cartersville. The college broke ground on the new campus on July 17, 2002. On August 20, 2005, the new campus on Route 20 in Bartow County opened for classes.
- Dr. Lynn Cundiff resigned as president July 31, 2000. Rob Watts was appointed as interim president August 1, 2000, and served until June 14, 2001, at which point Dr. Randy Pierce was appointed president, and began service June 15, 2001.
- Because of the institution’s continuing expansion south and east of the founding campus, plus the need to raise funds for well-defined initiatives such as scholarship and professional development, the college began exploring the possibility of changing its name to reflect its broader geographic reach in 2004. In March 2005, the Board of Regents approved a name change for the college, which became Georgia Highlands College on August 1, 2005.
- A teaching site was opened in Marietta on the campus of Southern Polytechnic State University in June 2005.
- In 2008, the Board of Regents recommended that Georgia Highlands open two new instructional sites, one in Paulding County and one in Douglas County, for Fall semester, 2009.
- In 2011, the Board of Regents approved a sector change for the college, moving Georgia Highlands to the state college level.

- The college's first four-year program was a BSN completion program in Nursing, which began in Fall 2013. The college's second four-year degree, a completion program in Dental Hygiene, will begin in 2015.
- In Fall 2012, the college began a new intercollegiate athletics program, as part of the National Junior College Athletic Association. GHC's first sport was men's and women's basketball, followed by softball and baseball.
- Dr. Randy Pierce retired on January 1, 2012, and was followed by Dr. Renva Watterson serving in the capacity of interim president. Dr. Donald Green begins service as the college's fourth permanent president on September 8, 2014.

Georgia Highlands College Administrative Personnel

Dr. Donald Green

President (beginning 2014)

Dr. Renva Watterson

Interim President (2012-2014);
Vice President Academic Affairs

Dr. Laura Musselwhite

Interim Vice President
Academic Affairs (2012-2014);
Director Strategic Planning,
Assessment and Accreditation

Jeff Davis

Vice President
Finance and Administration

Dr. Todd Jones

Vice President
Student Affairs

Jeff Patty

Chief Information Officer

Raymond Carnley

Chief Advancement Officer

Sheila Jones

Chief College Relations Officer

Virginia Siler

Chief Human Resources Officer

Elijah Scott,

Director, GHC Libraries

Phillip Gaffney

Director, Athletics

George White

Director, Continuing Education

Sandie Davis

Director, Admissions and Registrar

Phillip Kimsey

Director, Plant Operations

Megan Simpson

Director, Financial Aid

Jamie Petty

Director, Accounting

Megan Davidson

Director, Auxiliary and Budget

Cynthia Parker

Purchasing Manager

Rob Laltrello

Associate Director, IT

John Upton

Director, Campus Safety

Jeanette Eckles

Director, Enterprise Application
Services

Jason McFry

Associate Director, IT

Jeff Brown

Director, Digital Media Services/GHTV

Tony Gambill

Director, Audio Visual

Leslie Johnson

Academic Coordinator, Cartersville
Campus

Dr. Todd Jones

Campus Dean, Floyd Campus

Dr. Diane Langston

Academic Dean
eLearning

Dr. Jon Hershey

Academic Dean
Humanities

Donna Daugherty

Academic Dean
Natural Sciences and Physical
Education

Rebecca Maddox

Director, Nursing Program

Dr. Susan Claxton

Director, Human Services Program

Ken Reaves

Campus Dean, Marietta Campus

Dr. Cathy Ledbetter

Campus Dean, Paulding and
Douglasville Campuses

Dr. Tim Floyd

Academic Dean
Mathematics

Dr. Alan Nichols

Academic Dean
Social Sciences, Business, and
Education

Dr. Janet Alexander

Academic Dean
Health Sciences

Donna Miller,

Director, Dental Hygiene Program

Former Presidents

Dr. David B. McCorkle

President, 1969-1991

President Emeritus

Dr. J. Randy Pierce

President, 2001-2011

President Emeritus

Dr. Richard Trimble

Interim President, 1991-1992

Mr. Rob Watts

Interim President, 2012

Dr. H. Lynn Cundiff

President, 1992-2000

Dr. Renva H. Watterson

Interim President, 2012-2014

Mr. Rob Watts

Interim President, 2000-2001

Characteristics of the Institution

Georgia Highlands College, a state college of the University System of Georgia under the governance of the Board of Regents, was founded in 1970 to provide educational opportunities for the physical, intellectual, and cultural development of a diverse population in seven northwest Georgia counties. With the advent of distance learning technologies, specialty programs, five thriving campus locations, and collaborative arrangements, the College has expanded its scope of influence beyond the institution's original geographical area.

Purpose

The purpose of Georgia Highlands College is to provide access to a teaching and learning environment that prepares our students to thrive in a global society.

Philosophy

The philosophy of Georgia Highlands College is expressed in the beliefs that education is essential to the intellectual, physical, economic, social, emotional, cultural, and environmental well-being of individuals and society and that education should be geographically and physically accessible and affordable. In support of this philosophy, the College maintains a teaching/learning environment which promotes inclusiveness and provides educational opportunities, programs and services of excellence in response to documented needs.

Shared Values

1. Access—making programs and services available within our service area
2. Student Success—placing students' goals at the heart of what we do
3. Integrity—demonstrating an ethical approach by our words and actions
4. Excellence—providing the highest level of quality service and teaching
5. Freedom of expression—allowing all campus constituents to share thoughts and feelings in an honorable and open way
6. Inclusiveness—appreciating and incorporating the uniqueness of all individuals
7. Cooperation—modeling and forming collegial and productive relationships
8. Passion—inspiring others to create an environment of teaching, learning and work where all parties grow and are challenged
9. Critical Thinking—making decisions informed by data and shaped by context
10. Collaboration—building and fostering relationships that provide the highest mutual benefit to the college and the communities we serve

Mission Statement

The mission of Georgia Highlands College, a state college of the University System of Georgia, is to provide access to excellent educational opportunities for the intellectual, cultural and physical development of a diverse population through pre-baccalaureate associate degree transfer programs, career associate degree programs, and targeted baccalaureate degree programs that meet the economic development needs of the region.

Mission Goals

To achieve the mission of being a gateway to success for students, Georgia Highlands College has articulated the following goals:

- Effect quality teaching and learning that are focused on academic achievement and personal and professional growth.
- Provide comprehensive student services that encourage and enable all students to be successful learners.
- Engage students in a challenging atmosphere that prepares them for responsibility and leadership in an evolving global environment.
- Utilize appropriate technologies to advance programs, services and operations to support teaching and learning.
- Maintain efficient and effective administrative services to support all programs of the college.
- Foster community relationships that facilitate partnering for mutual success.

Vision

The vision of Georgia Highlands College is to be the premiere public, multi-campus institution of choice throughout our region, while serving as the state leader in transfer and retention within our sector.

Institutional Memberships and Accreditation

Accreditation:

Georgia Highlands College is accredited to award the Associate Degree and the Bachelor of Science in Nursing degree by the following agency:

Commission on Colleges of the Southern Association of Colleges and Schools
1866 Southern Lane
Decatur, GA 30033-4097
(404) 679-4500
www.sacscoc.org

The Georgia Highlands College Nursing ASN Program is accredited by the following agencies:

Accreditation Commission for Education in Nursing (formerly NLNAC)
3343 Peachtree Rd NE Suite 850
Atlanta, GA 30326
www.acenursing.org

The Georgia Highlands College Nursing BSN Program is in the candidacy process for accreditation by the agency:

Accreditation Commission for Education in Nursing (formerly NLNAC)
3343 Peachtree Rd NE Suite 850
Atlanta, GA 30326
www.acenursing.org

The Georgia Highlands College Nursing Program has approval of the following agency:

Georgia Board of Nursing
237 Coliseum Drive
Macon, GA 31217-3858
<http://sos.georgia.gov/PLB/RN/>

The Georgia Highlands College Dental Hygiene Program is accredited by the following agency:

Commission on Dental Accreditation
211 East Chicago Avenue
Chicago, IL 60611
<http://www.ada.org/prof/ed/accred/>

Affirmative Action/Non-discrimination Statement

Georgia Highlands College is committed to the principles of affirmative action and non-discrimination. The College welcomes diversity in its student body, faculty, staff and administration. GHC admits students, hires, evaluates, promotes, and rewards employees on the basis of the needs of the College and relevant performance criteria without regard to race, gender, age, disability, national origin, ethnicity, veteran's status or religion. It actively promotes respect of each individual.

In addition to those individuals already formally affiliated with the College, this affirmative action, non-discrimination principles are applied equally to all applicants for admission to any of the College's academic programs and to all applicants for employment by the College in any of its enterprise. The College maintains an Affirmative Action Process, and a system for addressing concerns relating to affirmative action and non-discrimination Principles.

Disability Services Complaints

Employees—Grievance Procedure

Employees with disabilities should have their grievances heard by the Human Resources Office.

Grievances in regard to rights under Section 504 should be filed with Student Support Services. This non-discrimination policy covers admission and activities, including but not limited to academic admissions, financial aid, educational services, and employment.

Students—Grievance Procedure

Any qualified person who believes that he/she has been excluded from participation in or denied the benefits of any service, program, or activity offered by Georgia Highlands College may seek redress by following the procedures below:

1. The person should attempt to resolve the complaint through informal conferences with the faculty/staff member involved.
2. If the aggrieved person cannot satisfactorily resolve the complaint through informal conference, he/she should direct his/her complaint in writing or in person to Student Support Services.
3. If requested by the aggrieved, the complaint may be heard by a grievance committee. The complaint should be in writing with supporting information. The response from the committee will be provided in writing.
4. If the aggrieved person still cannot satisfactorily resolve the complaint, he/she should direct his/her complaint in writing to the Vice President of Academic and Student Affairs.
5. If the aggrieved person is dissatisfied with results of any of these actions, he/she may direct his/her complaint to the President of Georgia Highlands College.

Anyone desiring information concerning these provisions should contact the Student Support Services Representative at their respective campus.

Cartersville 678-872-8004
Marietta 678-915-5021

Douglasville & Floyd 706-368-7536
Paulding 678-946-1029

GHC Foundation and Alumni Officers and Chapter Presidents 2013-2014

Foundation Association Officers

Chairman	David Caswell
Chairman Elect	Jeff Watkins
Treasurer	Luke Lester
Secretary/Executive Director	Raymond Carnley

Source: GHC Office of Advancement

National Alumni Association Officers

President	John Strain
Special Advisor to the Board	Harold Boyd

Source: GHC Office of Advancement

Alumni Chapter Presidents

Rome, Georgia	John Strain
---------------	-------------

Source: GHC Office of Advancement

STUDENT DATA

Georgia Highlands College 5-Year Enrollment Profile

	Semester	Headcount Enrollment	Full-Time Equivalent
Academic Year 2009-2010	Fall 2009	5219	4417
	Spring 2010	5177	3811
	Summer 2010	2181	815
Academic Year 2010-2011	Fall 2010	5235	4394
	Spring 2011	5248	4275
	Summer 2011	2422	1229
Academic Year 2011-2012	Fall 2011	5530	4584
	Spring 2012	5462	4407
	Summer 2012	2179	1099
Academic Year 2012-2013	Fall 2012	5533	4517
	Spring 2013	5227	4183
	Summer 2013	1979	989
Academic Year 2013-2014	Fall 2013	5492	4531
	Spring 2014	5228	4167
	Summer 2014	1956	957

Source: USG Semester Enrollment Reports (Summer numbers from Banner Reports)

Enrollment by Campus

Semester	Floyd	Cartersville	Heritage Hall	Marietta (Wellstar)	Douglasville	Paulding	Unduplicated Total
Fall 2009	1697	2394	259	942	72	192	5213
Fall 2010	1521	2204	252	994 (78)	192	306	5224
Fall 2011	1436	2266	275	1123 (54)	356	422	5522
Fall 2012	1505	2129	248	1003 (18)	499	478	5523
Fall 2013	1340	2086	235	1023 (20)	521	500	5488

Application Information for Fall 2013

Designation	Count
New Applications Entered	4497
Completed Applications	3566
Students Accepted	3046
New Accepts Enrolled	2133

First Year Retention Rates

Academic Year	First Time/Full Time Students	Institution Specific*		System Wide**	
		Number Retained	Percent Retained	Number Retained	Percent Retained
Fall 2008-Fall 2009	1101	625	56.8%	728	66.1%
Fall 2009-Fall 2010	1124	677	60.23%	718	63.88%
Fall 2010-Fall 2011	1125	704	62.58%	748	66.49%
Fall 2011-Fall 2012	1023	623	60.90%	657	64.22%

**The Institution Specific Retention rates represent the percentage of Fall Semester First Time, Full Time (FT/FT) students entering Georgia Highlands College the following Fall Semester.*

***The System Wide Retention rates represent the percentage of Fall Semester First Time, Full Time (FT/FT) students entering Georgia Highlands College who re-enroll at another Georgia System Institution the following Fall Semester.*

Graduation Rates

Cohort	Beginning Total	Number Graduating Within Three Years		Percentage Graduating Within Three Years	
		Institution Specific	System Specific	Institution Specific	System Specific
2006	1076	80	80	7.43%	7.43%
2007	1262	100	100	7.92%	7.92%
2008	1267	78	78	6.16%	6.16%
2009	1282	113	114	8.81%	8.89%

Transfer Rates

Academic Year	Students Transferring Out to Other USG Institutions
2007-2008	649
2008-2009	682
2009-2010	756
2010-2011	770

**latest data available from USG*

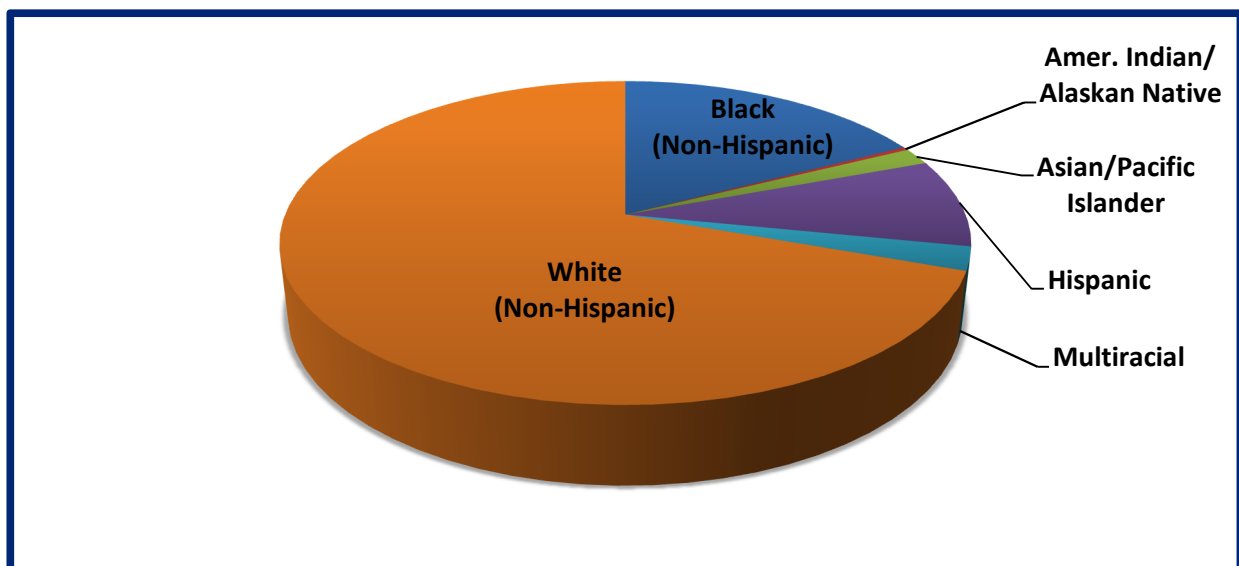
Enrollment by Self-Declared Ethnic Group

	Semester	Black (Non-Hispanic)	Amer. Indian/ Alaskan Native	Asian/Pacific Islander	Hispanic	Multiracial	White (Non-Hispanic)	Total
Academic Year 2009-2010	Fall 2009	568	21	97	247	78	4175	5186
	Spring 2010	616	20	88	270	79	4074	5147
	Summer 2010	293	10	51	77	29	1686	2146
Academic Year 2010-2011	Fall 2010	694	16	96	301	101	4005	5235
	Spring 2011	773	14	93	333	107	3904	5248
	Summer 2011	405	9	60	129	46	1756	2422
Academic Year 2011-2012	Fall 2011	939	17	105	404	119	3916	5530
	Spring 2012	963	15	103	374	119	3850	5462
	Summer 2012	415	6	41	131	44	1526	2183
Academic Year 2012-2013	Fall 2012	959	12	87	403	101	3942	5533
	Spring 2013	967	16	89	379	106	3652	5227
	Summer 2013*	356	4	41	135	36	1375	1968
Academic Year 2013-2014	Fall 2013	950	17	92	480	128	3804	5492
	Spring 2014	958	20	83	463	119	3562	5228
	Summer 2014*	363	5	35	150	42	1337	1956

Source: USG Semester Enrollment Reports

*Info from GHC Banner Report cd0130

Fall 2013 Enrollment by Ethnic Group



Campus Enrollment by Self-Declared Ethnic Group Cartersville

	Semester	Black (Non-Hispanic)	Amer. Indian/ Alaskan Native	Asian/Pacific Islander	Hispanic	Multiracial	White (Non-Hispanic)	Unknown	Total
Academic Year 2009-2010	Fall 2009	156	7	21	68	27	1605	16	1900
	Spring 2010	163	9	19	82	23	1626	20	1942
	Summer 2010	65	3	9	26	14	640	2	759
Academic Year 2010-2011	Fall 2010	155	5	19	81	32	1594	10	1896
	Spring 2011	159	5	20	101	31	1533	13	1862
	Summer 2011	83	2	9	39	13	719	2	867
Academic Year 2011-2012	Fall 2011	176	4	26	116	31	1565	12	1930
	Spring 2012	165	5	23	103	33	1496	10	1835
	Summer 2012	74	1	10	38	14	597	3	737
Academic Year 2012-2013	Fall 2012	160	5	14	105	24	1490	15	1813
	Spring 2013	167	6	17	103	28	1379	17	1717
	Summer 2013	71	1	14	41	5	496	6	634
Academic Year 2013-2014	Fall 2013	145	8	24	128	35	1487	16	1843
	Spring 2014	147	7	22	127	32	1355	17	1707
	Summer 2014	57	2	12	38	12	479	11	611

Campus Enrollment by Self-Declared Ethnic Group Douglasville

	Semester	Black (Non-Hispanic)	Amer. Indian/ Alaskan Native	Asian/Pacific Islander	Hispanic	Multiracial	White (Non-Hispanic)	Unknown	Total
Academic Year 2009-2010	Fall 2009	5	1	0	1	0	16	0	23
	Spring 2010	8	1	0	1	0	29	0	39
	Summer 2010	7	0	0	0	0	14	1	22
Academic Year 2010-2011	Fall 2010	25	0	0	4	3	82	1	116
	Spring 2011	34	0	1	10	6	101	2	154
	Summer 2011	39	1	1	7	4	60	1	113
Academic Year 2011-2012	Fall 2011	99	3	4	18	9	174	1	308
	Spring 2012	124	1	4	18	12	193	2	354
	Summer 2012	66	1	2	10	6	75	2	162
Academic Year 2012-2013	Fall 2012	142	1	5	25	16	256	2	447
	Spring 2013	135	2	3	24	13	241	5	423
	Summer 2013	46	0	2	7	6	81	4	146
Academic Year 2013-2014	Fall 2013	141	2	2	26	18	249	3	441
	Spring 2014	145	2	3	21	15	256	3	445
	Summer 2014	54	0	2	3	4	88	1	152

Campus Enrollment by Self-Declared Ethnic Group Floyd

	Semester	Black (Non-Hispanic)	Amer. Indian/ Alaskan Native	Asian/Pacific Islander	Hispanic	Multiracial	White (Non-Hispanic)	Unknown	Total
Academic Year 2009-2010	Fall 2009	141	7	30	80	20	1418	3	1699
	Spring 2010	159	7	31	84	22	1325	5	1633
	Summer 2010	89	2	28	37	7	634	5	802
Academic Year 2010-2011	Fall 2010	151	6	26	86	22	1250	4	1545
	Spring 2011	165	5	30	92	26	1244	5	1567
	Summer 2011	88	4	26	38	16	583	5	760
Academic Year 2011-2012	Fall 2011	176	5	23	106	28	1175	9	1522
	Spring 2012	180	4	24	105	25	1174	14	1526
	Summer 2012	88	2	10	32	10	496	6	644
Academic Year 2012-2013	Fall 2012	172	1	23	109	19	1212	19	1546
	Spring 2013	158	1	22	103	21	1131	14	1450
	Summer 2013	65	1	7	33	8	478	7	599
Academic Year 2013-2014	Fall 2013	129	0	20	119	24	1103	9	1404
	Spring 2014	135	1	14	115	22	1051	10	1348
	Summer 2014	60	1	5	45	6	434	5	556

Campus Enrollment by Self-Declared Ethnic Group Marietta

	Semester	Black (Non-Hispanic)	Amer. Indian/ Alaskan Native	Asian/Pacific Islander	Hispanic	Multiracial	White (Non-Hispanic)	Unknown	Total
Academic Year 2009-2010	Fall 2009	188	4	34	77	24	573	14	914
	Spring 2010	208	3	31	77	28	553	16	916
	Summer 2010	103	2	10	34	10	219	7	385
Academic Year 2010-2011	Fall 2010	297	3	39	106	36	608	9	1098
	Spring 2011	334	4	34	105	33	593	9	1112
	Summer 2011	158	1	20	36	13	245	5	478
Academic Year 2011-2012	Fall 2011	396	3	46	128	42	576	9	1200
	Spring 2012	409	3	45	117	38	549	16	1177
	Summer 2012	150	1	14	40	10	193	8	416
Academic Year 2012-2013	Fall 2012	389	1	40	135	34	509	9	1117
	Spring 2013	406	2	42	127	34	455	8	1074
	Summer 2013	142	0	15	42	11	183	3	396
Academic Year 2013-2014	Fall 2013	419	3	41	173	42	435	5	1118
	Spring 2014	398	5	40	168	40	409	9	1069
	Summer 2014	139	1	14	49	17	159	4	383

Campus Enrollment by Self-Declared Ethnic Group Paulding

	Semester	Black (Non-Hispanic)	Amer. Indian/ Alaskan Native	Asian/Pacific Islander	Hispanic	Multiracial	White (Non-Hispanic)	Unknown	Total
Academic Year 2009-2010	Fall 2009	14	1	1	3	2	116	0	137
	Spring 2010	17	1	1	8	2	152	0	181
	Summer 2010	10	0	0	5	2	48	0	65
Academic Year 2010-2011	Fall 2010	38	0	5	13	7	263	0	326
	Spring 2011	43	0	5	14	8	267	0	337
	Summer 2011	26	1	2	8	2	111	0	150
Academic Year 2011-2012	Fall 2011	66	2	4	28	12	336	1	449
	Spring 2012	73	2	5	24	12	269	2	487
	Summer 2012	32	1	2	11	4	142	0	192
Academic Year 2012-2013	Fall 2012	85	4	3	27	9	428	3	559
	Spring 2013	93	4	4	24	8	390	5	528
	Summer 2013	32	2	3	12	6	137	1	193
Academic Year 2013-2014	Fall 2013	101	4	5	36	10	491	7	654
	Spring 2014	113	4	4	34	11	450	6	622
	Summer 2014	50	1	2	15	3	164	3	238

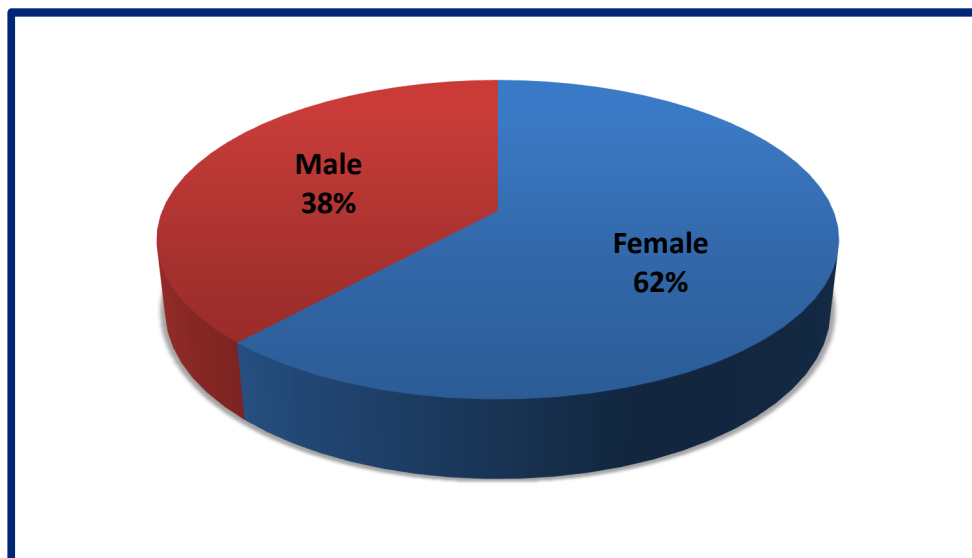
Enrollment by Gender

	Semester	Female (Headcount)	Female (Percentage)	Male (Headcount)	Male (Percentage)	Total
Academic Year 2009-2010	Fall 2009	3287	63.0%	1932	37.0%	5219
	Spring 2010	3308	63.9%	1869	36.1%	5177
	Summer 2010	1502	70.0%	644	30.0%	2146
Academic Year 2010-2011	Fall 2010	3270	62.5%	1965	37.5%	5235
	Spring 2011	3297	62.8%	1951	37.2%	5248
	Summer 2011	1680	69.4%	742	30.6%	2422
Academic Year 2011-2012	Fall 2011	3471	62.8%	2059	37.2%	5530
	Spring 2012	3455	63.3%	2007	36.7%	5462
	Summer 2012	1467	67.2%	715	32.8%	2183
Academic Year 2012-2013	Fall 2012	3491	63.1%	2042	36.9%	5533
	Spring 2013	3307	63.3%	1920	36.7%	5227
	Summer 2013*	1271	64.6%	697	35.4%	1968
Academic Year 2013-2014	Fall 2013	3391	61.7%	2101	38.3%	5492
	Spring 2014	3282	62.8%	1946	37.2%	5228
	Summer 2014*	1327	67.8%	629	32.2%	1956

Source: USG Semester Enrollment Reports

* Info taken from GHC Banner report cd0130

Fall 2013 Enrollment by Gender



Campus Enrollment by Gender Cartersville

	Semester	Female	Male	Total
Academic Year 2009-2010	Fall 2009	1189	711	1900
	Spring 2010	1220	722	1942
	Summer 2010	521	238	759
Academic Year 2010-2011	Fall 2010	1192	704	1896
	Spring 2011	1179	683	1862
	Summer 2011	597	270	867
Academic Year 2011-2012	Fall 2011	722	1208	1930
	Spring 2012	1157	678	1835
	Summer 2012	475	261	737
Academic Year 2012-2013	Fall 2012	1139	674	1813
	Spring 2013	1071	646	1717
	Summer 2013	381	253	634
Academic Year 2013-2014	Fall 2013	1083	760	1843
	Spring 2014	1032	675	1707
	Summer 2014	398	213	611

Campus Enrollment by Gender Douglasville

	Semester	Female	Male	Total
Academic Year 2009-2010	Fall 2009	19	4	23
	Spring 2010	29	10	39
	Summer 2010	17	5	22
Academic Year 2010-2011	Fall 2010	62	54	116
	Spring 2011	81	73	154
	Summer 2011	82	31	113
Academic Year 2011-2012	Fall 2011	193	115	308
	Spring 2012	233	121	354
	Summer 2012	120	42	162
Academic Year 2012-2013	Fall 2012	289	158	447
	Spring 2013	276	147	423
	Summer 2013	95	51	146
Academic Year 2013-2014	Fall 2013	286	155	441
	Spring 2014	297	148	445
	Summer 2014	114	38	152

Campus Enrollment by Gender Floyd

	Semester	Female	Male	Total
Academic Year 2009-2010	Fall 2009	1129	570	1699
	Spring 2010	1093	540	1633
	Summer 2010	571	231	802
Academic Year 2010-2011	Fall 2010	1016	529	1545
	Spring 2011	1015	552	1567
	Summer 2011	544	216	760
Academic Year 2011-2012	Fall 2011	988	534	1522
	Spring 2012	1004	522	1526
	Summer 2012	456	188	644
Academic Year 2012-2013	Fall 2012	1013	533	1546
	Spring 2013	955	495	1450
	Summer 2013	405	194	599
Academic Year 2013-2014	Fall 2013	902	502	1404
	Spring 2014	894	454	1348
	Summer 2014	387	169	556

Campus Enrollment by Gender Marietta

	Semester	Female	Male	Total
Academic Year 2009-2010	Fall 2009	493	421	914
	Spring 2010	521	395	916
	Summer 2010	248	137	385
Academic Year 2010-2011	Fall 2010	612	486	1098
	Spring 2011	639	473	1112
	Summer 2011	306	172	478
Academic Year 2011-2012	Fall 2011	704	46	1200
	Spring 2012	684	493	1177
	Summer 2012	253	163	416
Academic Year 2012-2013	Fall 2012	649	468	1117
	Spring 2013	624	450	1074
	Summer 2013	255	141	396
Academic Year 2013-2014	Fall 2013	654	464	1118
	Spring 2014	608	461	1069
	Summer 2014	243	140	383

Campus Enrollment by Gender Paulding

	Semester	Female	Male	Total
Academic Year 2009-2010	Fall 2009	83	54	137
	Spring 2010	109	72	181
	Summer 2010	61	4	65
Academic Year 2010-2011	Fall 2010	209	117	326
	Spring 2011	219	118	337
	Summer 2011	111	39	150
Academic Year 2011-2012	Fall 2011	294	155	449
	Spring 2012	314	173	487
	Summer 2012	138	54	192
Academic Year 2012-2013	Fall 2012	362	197	559
	Spring 2013	350	178	528
	Summer 2013	135	58	193
Academic Year 2013-2014	Fall 2013	441	213	654
	Spring 2014	429	193	622
	Summer 2014	176	62	238

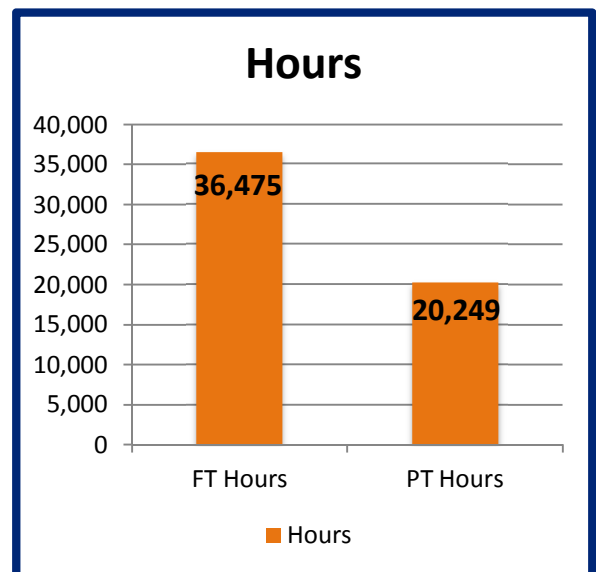
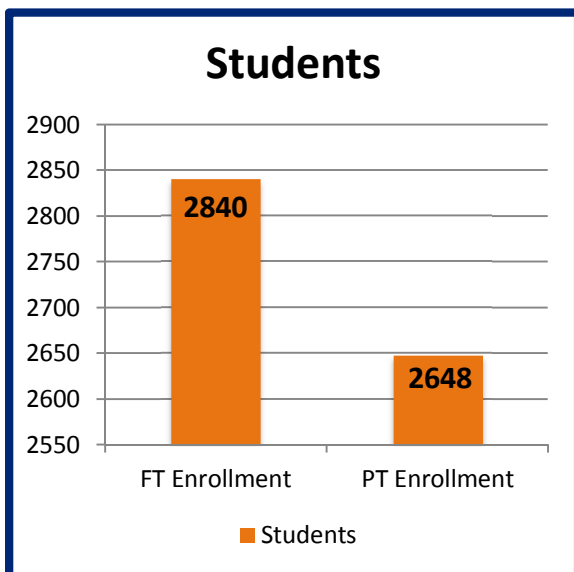
Enrollment by Average Age

Semester	Average Age in Years
Fall 2009	24.1
Fall 2010	24.5
Fall 2011	24.7
Fall 2012	24.1
Fall 2013	23.7

Campus Enrollment by Average Age

Semester	Online	Cartersville	Douglasville	Floyd	Heritage Hall	Marietta	Wellstar	Paulding
Fall 2009	-	25.5	23.7	26.5	31.9	25.0	-	24.4
Fall 2010	24.5	25.1	22.0	27.5	32.5	24.4	33.0	22.8
Fall 2011	24.5	24.7	23.1	24.7	32.3	22.5	34.1	23.0
Fall 2012	32.5	23.7	23.3	24.4	31.6	22.8	37.6	23.1
Fall 2013	32.5	23.5	23.0	24.9	28.0	23.0	34.1	22.7

Full-Time (FT) and Part-Time (PT) Enrollment and Semester Hours Fall 2013

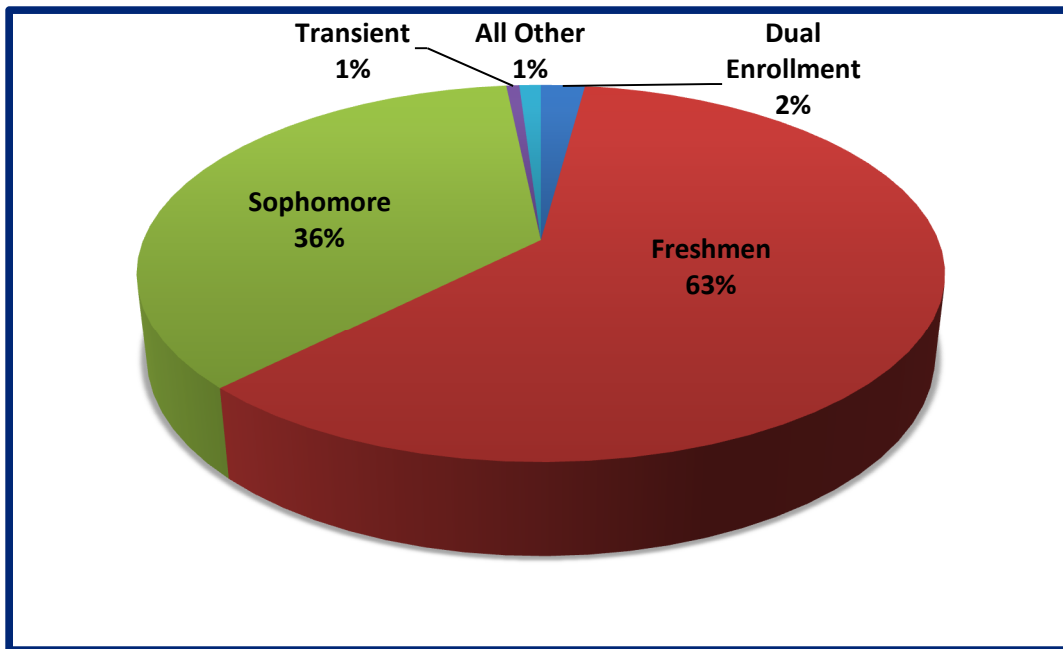


Fall Enrollment of Current Students by Classification

Semester	Dual Enrollment		Freshmen		Sophomore		Transient		All Other	
	Count	%	Count	%	Count	%	Count	%	Count	%
Fall 2009	65	1.2%	3397	65.0%	1610	31.0%	18	0.3%	129	2.5%
Fall 2010	73	1.4%	3346	63.9%	1655	31.6%	25	0.5%	136	2.6%
Fall 2011	111	2.0%	3476	62.8%	1843	33.3%	42	0.8%	58	1.0%
Fall 2012	139	2.5%	3354	60.6%	1947	35.2%	40	0.7%	53	1.0%
Fall 2013	115	2.1%	3313	60.3%	1974	35.9%	34	0.6%	56	1.0%

Source: USG Semester Enrollment Reports

Fall 2013 Enrollment of Current Students by Classification

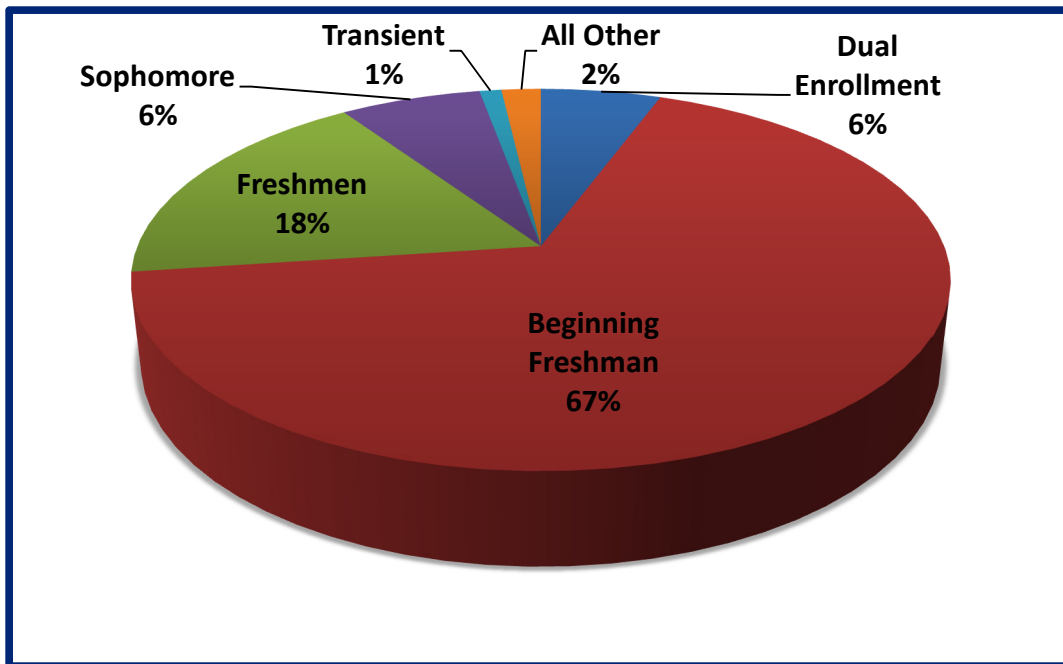


Fall Enrollment of New Students by Classification

Semester	Dual Enrollment		Beginning Freshmen		Freshmen		Sophomore		Transient		All Other	
	#	%	#	%	#	%	#	%	#	%	#	%
Fall 2009	62	3.4%	1227	68.0%	382	21.1%	98	5.4%	11	0.6%	29	1.6%
Fall 2010	72	4.1%	1246	69.9%	327	18.4%	97	5.4%	18	1.0%	21	1.2%
Fall 2011	105	5.7%	1213	66.3%	334	18.3%	116	6.3%	18	1.0%	43	2.4%
Fall 2012	126	7.2%	1098	62.5%	354	20.1%	121	6.9%	20	1.1%	39	2.2%
Fall 2013	104	5.6%	1243	67.2%	327	17.7%	122	6.6%	19	1.0%	34	1.8%

Source: USG Semester Enrollment Reports

Fall 2013 Enrollment of New Students by Classification



Total Enrollment by County of Residence

County	Fall 2009	Fall 2010	Fall 2011	Fall 2012	Fall 2013
Bartow	988	900	967	931	945
Carroll	60	75	90	96	91
Chattooga	91	85	81	92	81
Cherokee	663	657	565	473	468
Cobb	1294	1320	1344	1329	1332
Douglas	62	169	267	354	385
Floyd	971	868	841	811	789
Gordon	171	160	132	148	134
Haralson	65	64	48	46	30
Paulding	264	347	440	513	615
Polk	348	317	292	312	296
Other, GA	222	194	276	181	217
Cherokee, AL	1	10	7	15	15
All Other	9	16	7	11	20

Fall 2013 Top 20 Feeder High Schools

High School	County	Fall 2013
Woodland High School	Bartow	239
Rome High School	Floyd	198
Cartersville High School	Bartow	193
Cass Comprehensive High School	Bartow	183
East Paulding High School	Paulding	169
Cedartown High School	Polk	166
Pepperell High School	Floyd	136
Harrison High School	Cobb	131
North Cobb High School	Cobb	129
South Paulding High School	Paulding	125
North Paulding High School	Paulding	117
McEachern High School	Cobb	112
Coosa High School	Floyd	108
Kennesaw Mountain High School	Cobb	106
Armuchee High School	Floyd	105
Paulding County High School	Paulding	105
Robert S Alexander Comprehensive	Douglas	98
Hillgrove High School	Cobb	92
Allatoona High School	Cobb	91
Model High School	Floyd	91
GED Student		304

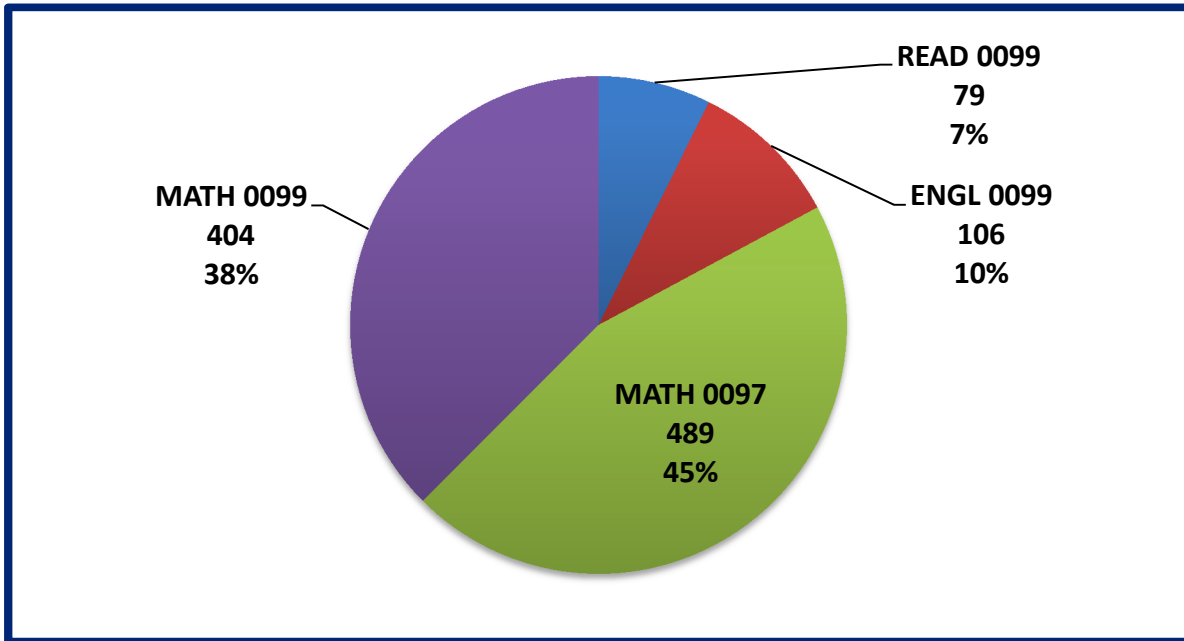
Average Composite Scholastic Assessment Test (SAT) Scores for Entering Freshmen

Year	Composite Score
2009-2010	904
2010-2011	886
2011-2012	879
2012-2013	884
2013-2014	893

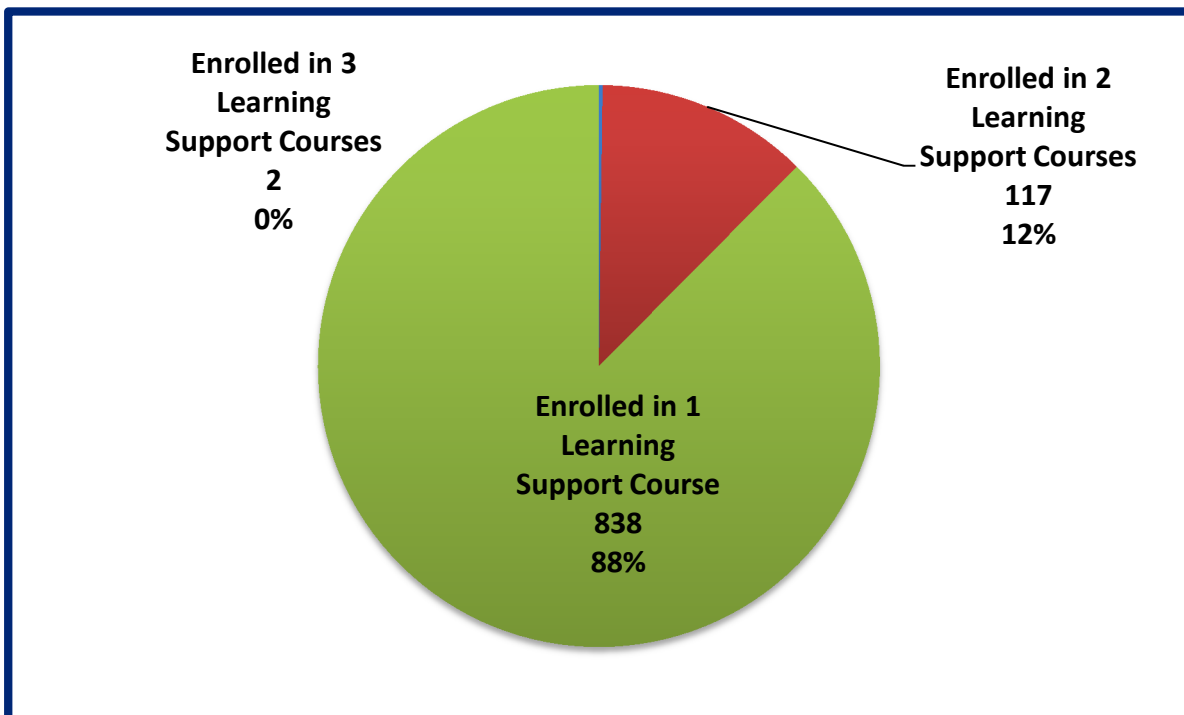
Note:

- 1. Students with missing data on SAT, students with GED's, students admitted into program not requiring SAT scores, and students admitted based on ACT scores are not included in calculating the composite scores*
- 2. The composite score is derived by summing the SAT verbal score and the SAT math score. The possible range for SATV and SATM is 200 through 800; the possible composite score range is 400 through 1600.*

Academic Success Enrollment by Type of Courses Fall 2013



Academic Success Enrollment by Number of Courses Fall 2013



ACADEMIC PROGRAMS

Degree Programs

Transfer Programs

Associate of Arts degree:

Art
Communication
Criminal Justice
English
Foreign Languages
History
Journalism
Philosophy
Political Science
Psychology
Sociology

Associate of Science degree:

Agriculture
Associated Dental Sciences
Biology
Business Administration
Chemistry
Computer Information Systems
Computer Science
Economics
General Studies
Geology
Health Information Management
Mathematics
Medical Technology
Nursing
Occupational Therapy
Physician's Assistant
Physics
Pre-Physical Therapy
Pre-Pharmacy
Respiratory Therapy
Teacher Education

Career Programs

Associate of Science degree:

Dental Hygiene
Nursing (RN)
LPN Bridge
EMT/Paramedic Bridge
Human Services

Bachelor of Science degree:

Nursing (BSN completion)

Most Popular Areas of Study by Campus Fall 2013

Campus	Area of Study	Number of Student Enrolled
Cartersville	General Studies	370
	Pre-Nursing	347
	Business Administration	337
	Early Childhood Education	122
	Psychology	96
Douglasville	Pre-Nursing	109
	General Studies	72
	Business Administration	50
	Undeclared-Transfer	24
	Early Childhood Education	24
Floyd	Pre-Nursing	370
	General Studies	206
	Business Administration	116
	Biology	67
	Early Childhood Education	62
Heritage Hall	Nursing	175
	Dental Hygiene	25
	LPN Bridge to Nursing	17
	Paramedic Bridge to Nursing	11
	Pre-Dental Hygiene/FC	3
Marietta/Wellstar	General Studies	203
	Business Administration	165
	Pre-Nursing	159
	Computer Science	60
	Psychology	53
Paulding	Pre-Nursing	105
	General Studies	89
	Business Administration	42
	Early Childhood Education	41
	Criminal Justice	23

Enrollment by Program of Study

Transfer Programs

Program of Study	Fall 2009	Fall 2010	Fall 2011	Fall 2012	Fall 2013
Associate of Arts					
Art	91	97	96	75	57
Communications	-	-	5	71	114
Communications and Drama	25	31	55	20	
Criminal Justice	138	193	205	181	190
English	61	55	64	55	49
Foreign Languages	19	19	17	11	9
History	76	75	62	71	63
Journalism	38	52	43	37	39
Computer Science	93	109	113	148	163
Philosophy	7	8	6	4	4
Political Science	32	48	42	47	38
Psychology	154	185	226	240	247
Sociology	14	17	28	29	27
Associate of Science					
Agriculture	14	9	8	10	13
Associated Dental Sciences (Dental Hygiene)	4	6	5	3	2
Biology	142	161	198	197	206
Business Administration	625	603	575	628	700
Chemistry	28	31	44	31	40
Computer Information Systems	35	46	52	46	41
Early Childhood Education	515	381	322	291	276
Economics	11	9	10	14	13
Elementary Education	-	-	-	-	-
General Studies	975	961	1022	940	904
Geology	5	7	8	9	9
Health Information Management	11	13	19	24	17
Mathematics	47	36	54	47	53
Medical Technology	19	19	18	15	21
Middle Grades Education	58	48	49	40	41
Nursing (RN to BSN Program)	-	-	-	-	32
Nursing, transfer	42	39	37	56	51
Occupational Therapy	11	27	17	18	23
Pharmacy	38	47	61	75	64
Physical Education	44	49	43	25	23
Physical Therapy	25	38	76	101	133

Program of Study	Fall 2009	Fall 2010	Fall 2011	Fall 2012	Fall 2013
Physician's Assistant	16	18	18	29	21
Physics	23	27	22	19	23
Respiratory Therapy	6	2	8	14	9
Special Education	28	33	22	29	22
Teacher Education	1	-	-	-	-

Career Programs

Program of Study	Fall 2009	Fall 2010	Fall 2011	Fall 2012	Fall 2013
Career Programs at Georgia Highlands College					
Associate of Science in Human Services					
Human Services	50	52	67	73	54
Corrections	-	-	-	-	-
Human Services/Gerontology	-	-	-	-	-
Interpreter Education (ASL Immersion Training/Interpreter)	-	-	-	-	-
Associate of Science in Nursing					
Nursing (RN Program)	326	295	264	191	188
Pre-Nursing	949	948	1031	1133	1054
Pre-RN to BS Nursing	-	-	-	-	15
Nursing LPN Bridge	51	61	78	81	79
Nursing Paramedic Bridge	6	14	17	21	32
Associate of Science in Dental Hygiene					
Dental Hygiene - FC	25	29	13	14	28
Pre-Dental Hygiene - FC	144	131	156	155	148
Bachelors of Science in Nursing					
Career Programs at Georgia Northwestern Technical College					
Associate of Applied Science in Business					
Accounting	9	12	18	7	1
Business and Office Technology	-	-	-	-	-
Office Technology	5	2	3	-	-
Marketing and Management	19	17	26	8	1
Computer Programming	2	3	2	1	1
Drafting	4	3	3	-	-

Program of Study	Fall 2009	Fall 2010	Fall 2011	Fall 2012	Fall 2013
Early Childhood Education	-	-	-	-	-
Management and Supervisory Development	6	3	8	3	-
Microcomputer Specialist	-	-	-	-	-
Networking Specialist	-	-	-	-	-
Associate of Applied Science in Health					
Medical Assisting	1	-	-	-	-
Respiratory Therapy Technology	-	2	-	-	-
Radiologic Technology	22	23	32	6	4

Graduates by Degree and Program of Study

Program of Study/Option	Code	09-10	10-11	11-12	12-13	13-14
Associate of Arts						
Art	5007	5	5	3	5	5
Criminal Justice	4301	15	14	19	23	11
English	2301	3	4	3	4	3
Foreign Language	1601	-	4	3	1	-
Communications	2320	-	-	2	5	16
Communication and Drama	2310	-	2	5	1	-
History	4508	4	3	3	2	2
Journalism	0904	1	2	-	2	1
Philosophy	3801	-	2	-	2	-
Political Science	4510	3	7	5	3	10
Psychology	4201	24	29	35	46	48
Sociology	4511	4	3	5	1	2
Associate of Science						
Agriculture	0201	2	1	-	-	-
Biology	2601	1	1	3	5	6
Business Administration	0604	96	80	102	103	111
Business Information Systems	0722	-	-	-	-	-
Chemistry	4005	2	2	2	4	3
Computer Information Systems	1101	3	4	3	2	2
Computer Science	1199	-	4	4	1	-
Early Childhood Education	1323	78	59	55	51	58
Economics	0605	1	6	-	-	2
Elementary Education	1312	-	-	-	-	-
Forestry	0304	-	-	-	-	-
General Studies	2104	61	77	85	78	77
Geology	4006	2	-	-	1	1
Health, Fitness and Leisure	1337	-	-	-	-	-
Industrial Management	0620	-	-	-	-	-
Mathematics	2701	3	-	4	1	3
Health Information Management	1807	5	-	5	12	5
Medical Technology	1809	-	-	-	-	-
Middle Grades Education	1322	9	9	8	12	11
Nursing, Transfer	1899	1	5	1	2	2
Occupational Therapy	1799	-	3	-	1	-
Pharmacy	1819	-	-	3	1	1
Physics	4008	1	2	1	1	-
Physical Education	1334	1	4	1	-	1
Physical Therapy	1713	-	1	1	-	1

Program of Study/Option	Code	09-10	10-11	11-12	12-13	13-14
Associate of Science (continued)						
Associated Dental Sciences	1701	-	-	-	-	1
Physician's Assistant	1705	-	-	-	1	-
Pre-Nursing	1810	1	-	-	3	-
LPN Bridge to Nursing	1813	1	-	2	3	1
Pre-Veterinary Medicine	1820	-	-	-	-	-
Pre-Medicine	1818	-	-	-	-	-
Respiratory Therapy	1718	-	1	-	1	-
Secondary Education	1325	-	-	-	-	-
Special Education	1327	3	5	6	13	5
Teacher Education	1313	-	-	-	-	-
Undeclared – Transfer	0000	-	-	-	-	-
Associate of Science in Nursing						
Nursing	1811	144	140	190	136	133
Paramedic Bridge to Nursing	1814	-	1	1	2	-
Pre-RN to BS Nursing	1821	-	-	-	-	1
Associate of Science in Dental Hygiene						
Dental Hygiene	5106	12	13	10	8	14
Pre-Dental Hygiene/FC	5105	1	-	-	5	-
AAS in Business						
Accounting (GNTC)	0730	1	-	-	1	-
Accounting (NMT)	0731	2	1	-	-	-
Business & Office Technology (GNTC)	0780	-	-	-	-	-
Business & Office Technology (NMT)	0781	-	-	1	-	-
Computer Programming (GNTC)	0733	1	-	-	-	-
Computer Programming (NMT)	0735	-	-	-	-	-
Computer Programming (GNTC)	0736	-	-	-	-	-
Computer Info Services	0737	-	-	-	-	-
Hotel & Travel Management (NMT)	0607	-	-	-	-	-
Office Technology	0784	1	-	-	-	-
Office Technology (GNTC)	0785	3	-	-	1	-
Management and Supervisory Development (GNTC)	0613	-	-	1	-	-
Management and Supervisory Development (NMT)	0614	1	-	-	-	-
Applied Manufacturing (NMT)	0615	-	-	-	-	-
Marketing & Management (GNTC)	0820	1	1	1	1	-
Marketing & Management (NMT)	0821	-	-	-	-	-
Microcomputer Specialist (GNTC)	0742	-	-	-	-	-
Microcomputer Specialist NMT)	0743	-	-	-	-	-
Visual Communications (NMT)	0782	-	-	-	-	-

Program of Study/Option	Code	09-10	10-11	11-12	12-13	13-14
AAS in Services						
Air Conditioning Technology (GNTC)	4720	-	-	-	-	-
Cosmetology (GNTC)	1240	-	-	-	-	-
Environmental Horticulture (NMT)	0106	-	-	-	-	-
Industrial Electrical Technology (GNTC)	4630	1	-	-	-	-
AAS in Technology						
Advanced Drafting (NMT)	4811	-	-	-	-	-
ASSET (NMT)	4763	-	-	-	-	-
Automotive Technology (NMT)	4761	-	-	-	-	-
Drafting (GNTC)	4810	-	-	-	-	-
Auto Services Tech	4764	-	-	-	-	-
Electronic Technology (GNTC)	4710	-	-	-	-	-
Electronics (NMT)	4711	-	-	-	-	-
Industrial Maintenance (GNTC)	4721	-	-	-	-	-
Industrial Sys Maintenance (GNTC)	4723	-	-	-	-	-
AAS in General Business						
General Business	0798	-	-	-	-	-
General Business/ Legal Assistant	2203	-	-	-	-	-
General Business/ Management	0796	-	-	-	-	-
AAS in Law Enforcement						
Law Enforcement	4307	-	-	-	-	-
AAS in Human Services						
ASL Immersion Training/Interpreter	1398	-	-	-	-	-
Human Services	1704	7	10	16	16	14
Human Services/ Corrections	1784	-	-	-	-	-
Human Services/Hearing Impaired	1785	-	-	-	-	-
Human Services/Gerontology	1786	-	-	-	-	-
AAS in Information Technology						
Information Technology	1104	-	-	-	-	-
AAS in Education for Paraprofessionals						
Education for Paraprofessionals	1326	-	-	-	-	-
AAS in Health						
Paramedic Technology	1756	1	-	-	-	-
Paramedic Technology (GNTC)	1755	-	-	-	-	-
Radiologic Technology (GNTC)	1779	1	-	-	-	-
Respiratory Therapy Technology (GNTC)	1780	-	-	-	-	-

Program of Study/Option	Code	09-10	10-11	11-12	12-13	13-14
AAS in Physical Therapist Assistant						
Physical Therapist Assistant	5108	-	-	-	-	-
Pre-Physical Therapist Assistant	5109	-	-	-	-	-
Certificate Program						
Information Tech Certificate	1103	-	-	-	-	-
Criminal Justice Certificate	4302	-	-	-	1	-
Interpreter Certificate	1397	-	-	-	-	-
Bachelor of Science						
RN to BSN Nursing	1822	-	-	-	-	17
Total Graduates for the Academic Year		508	506	589	560	568

CREDIT HOURS

Credit Hours by Campus

	Semester	Floyd	Heritage Hall	Cartersville	Extended Learning	Marietta	Wellstar	Paulding	Douglasville	Total
Academic Year 2009-2010	Fall 2009	16,322	2,292	23,252	2,892	8,856	-	1,587	613	55,814
	Spring 2010	15,380	2,270	21,299	3,981	8,350	693	1,927	676	54,576
	Summer 2010	4,667	733	4,418	2,594	1,620	-	117	105	14,254
	TOTALS	36,369	5,295	48,969	9,467	18,826	693	3,631	1,394	124,644
Academic Year 2010-2011	Fall 2010	14,460	2,268	20,701	3,210	9,696	702	2,679	1,738	56,076
	Spring 2011	13,902	2,242	19,816	3,784	9,047	720	2,419	2,142	54,072
	Summer 2011	3,726	547	4,608	2,831	1,989	90	603	483	14,877
	TOTALS	32,088	5,057	45,125	9,825	20,732	1,512	5,701	4,363	125,025
Academic Year 2011-2012	Fall 2011	13,351	2,475	20,045	3,787	10,589	486	3,422	3,158	57,313
	Spring 2012	13,178	2,575	18,400	4,206	9,430	432	3,371	3,653	55,245
	Summer 2012	2,915	509	3,685	2,991	1,644	50	723	781	13,298
	TOTALS	29,444	5,559	42,130	10,984	21,663	968	7,516	7,592	125,856
Academic Year 2012-2013	Fall 2012	13,319	2,232	18,522	4,576	9,398	162	3,940	4,187	56,336
	Spring 2013	12,121	2,354	16,676	5,363	8,523	171	3,375	3,810	52,393
	Summer 2013	2,249	562	2,846	3,935	1,450	70	496	514	12,122
	TOTALS	27,689	5,148	38,044	13,874	19,371	403	7,811	8,511	120,851
Academic Year 2013-2014	Fall 2013	12,818	8,996	19,510	7,298	9,572	360	3,962	4,416	66,932
	Spring 2014	12,065	7,004	17,443	7,360	8,359	360	3,380	3,652	59,623
	Summer 2014	2,212	580	3,264	4,555	1,087	0	370	519	12,587
	TOTALS	27,095	16,580	40,217	19,213	19,018	720	7,712	8,587	139,142

Credit Hours by Division

Social Sciences/Business

Campus	Fall 2010	Fall 2011	Fall 2012	Fall 2013
Floyd	4051	4119	4018	3274
Heritage Hall	-	-	-	-
Cartersville	6363	6204	5834	5589
Marietta	2844	3267	2733	2999
Paulding	636	840	1233	1285
Douglasville	321	531	1023	1061
TOTAL HOURS	14,215	14,961	14,841	14,208

Mathematics

Campus	Fall 2010	Fall 2011	Fall 2012	Fall 2013
Floyd	1881	1611	1740	1520
Heritage Hall	-	-	-	-
Cartersville	3056	3028	2810	2990
Marietta	1511	1683	1406	1479
Paulding	378	522	631	668
Douglasville	218	447	582	670
TOTAL HOURS	7044	7291	7169	7327

Humanities

Campus	Fall 2010	Fall 2011	Fall 2012	Fall 2013
Floyd	3110	2604	2775	2462
Heritage Hall	-	-	-	14
Cartersville	4737	4671	4402	4375
Marietta	2691	2622	2628	2547
Paulding	837	912	873	933
Douglasville	624	996	1116	1122
TOTAL HOURS	11,999	11,805	11,794	11,453

Natural Sciences/Physical Education

Campus	Fall 2010	Fall 2011	Fall 2012	Fall 2013
Floyd	3768	3444	3565	4207
Cartersville	3946	3785	3683	4754
Marietta	1164	1369	1354	1420
Paulding	236	282	437	446
Douglasville	56	348	816	980
TOTAL HOURS	9170	9228	9855	11,807

Health Sciences

Campus	Fall 2009	Fall 2010	Fall 2011	Fall 2012	Fall 2013
Heritage Hall	2277	2772	2475	2232	8982
Marietta/Wellstar	720	702	486	162	360
TOTAL HOURS	2997	3474	2961	2394	9342

Academic Success

Campus	Fall 2009	Fall 2010	Fall 2011	Fall 2012	Fall 2013
Floyd	1910	1650	1573	1221	1355
Heritage Hall	-	-	-	-	-
Cartersville	3132	2599	2357	1793	1802
Marietta	1219	1486	1651	1277	1127
Paulding	344	592	866	766	630
Douglasville	173	519	836	650	583
TOTAL HOURS	6778	6846	7283	5707	5497

Extended Learning—Fall 2013

	Credit Hours	Number of Sections	GHC Professors Teaching
DVD and Web-Based	7298	94	52

Fall 2013 Credit Hours Taught by Full- and Part-Time Faculty

	Credit Hours	Percentage of Total Hours
Full-Time Faculty	43,227	76.4%
Part-Time Faculty	13,372	23.6%
TOTAL	56,599	100%

Library

The Georgia Highlands College Libraries support the College's mission of teaching, research, and service, and provide access to resources in all formats in order to meet the curricular and intellectual needs of the Georgia Highlands College community.

Our Vision

- Treat every library patron with courtesy, dignity, and respect.
- Provide the best possible library resources and services for students, faculty, staff, and the community.
- Do our utmost to meet the research and information needs of every library patron.

In order to better meet the needs of our six GHC locations, our libraries have made many changes in recent years. Our Georgia Highlands College Libraries have more than 77,000 printed books, held at the Floyd, Cartersville, and Paulding Campuses, and we provide access to more than 85,000 additional online books that are available from any location with internet access. Through the statewide GIL Express system, our students can request almost any book held by any library in the University System of Georgia. Through InterLibrary Loan, our libraries can usually borrow books from almost any library in the world.

Other new services include access to online video databases such as Films on Demand and Theatre in Video, which provide access to over 30,000 high-quality academic videos online. These databases allow faculty and students to access videos online from any location, rather than attempting to shuffle DVDs and VHSs among multiple campus locations.

Our libraries have subscriptions to numerous print magazines, journals, and newspapers, held at the Floyd, Cartersville, and Paulding Campuses. Through GALILEO, our students, faculty, and staff can access more than 37,000 additional magazine, journal, and newspaper titles. If an article is not available in our print collections or in GALILEO, our students can use InterLibrary Loan to request a copy of the article from another library.

Students will find a welcoming and helpful atmosphere at all GHC campus libraries. At the Rome, Cartersville, and Paulding Campuses, students have access to group and private study rooms, quiet study areas, high-tech conference rooms, abundant computer resources, and many additional features to enhance their learning experience. Students at the Douglasville campus will have a new library as of the Fall 2014 semester. Students on the Marietta campus will find an equally welcoming and helpful environment at the Southern Polytechnic State University Library, where librarians from both GHC and SPSU are always ready to help.

Students at any location can get help through live chat, text messaging, and social media by visiting <http://ask.highlands.edu>.

As teaching libraries, our librarians provide assignment-related instruction sessions in classes across the curriculum, with the goal of encouraging our students to be independent researchers and lifelong learners.

Fiscal Year 2013-14 Highlights

- Circulated 21,643 items during the year
- Loaned 719 items to other libraries and received 431 (GIL Express & ILL) items from other libraries
- Recorded approximately 186,156 visits to the campus libraries:
Rome – 53,505, Cartersville – 116,209 and Paulding – 16,442
- Library faculty and staff answered 11,241 questions
- Library faculty taught 227 research training classes for 4,938 students

Library Collections Held at End of Year

Category		2009-2010	2010-2011	2011-2012	2012-2013	2013-2014
Books	-Volumes	82,654	71,330	72,717	74,183	77,065
	-Titles	70,302	60,090	65,776	66,713	71,097
	-eBooks		65,847	74,184	84,228	85,565
Serials	-Current Subscriptions	248	248	109	82	82
	-Unique Titles	248	248	143	110	110
Manuscripts/ Archive	-Linear Feet	22	22	70	95	95
Film Video	-Units	2,135	2,137	1,676	1,445	1,413
	-Titles	1,459	1,561	1,231	916	908
	-Online		6,365	16,510	30,222	32,225
Databases	-Units	200	208	334	334	333

Library Services

Category		2009-2010	2010-2011	2011-2012	2012-2013	2013-2014
Circulation Transactions	-Printed Books	7,799	7,141	7,989	7,275	6,904
	-eBooks			728	11,117	14,739
Document loans to other libraries	-Returnable	96	225	148	139	135
	-Non-Returnable	32	11	13	9	8
Documents loans from other libraries	-Returnable	56	47	52	54	45
	-Non-Returnable	69	52	24	59	44
Information services to groups	-Presentations	194	199	287	229	227
	-People Served	4,540	4,362	6,866	4,959	4,938
GIL Express Transactions	-From other institutions	771	747	452	352	337
	-To other institutions	1505	774	820	686	576
Questions Answered		4,033	10,165	11,008	9,435	11,241

Library Visits	2009-2010	2010-2011	2011-2012	2012-2013	2013-2014
Cartersville	168,576	140,931	137,880	106,986	116,209
Paulding			2,175	9,206	16,442
Rome	57,657	62,494	54,337	56,915	53,505
TOTAL	226,233	203,425	194,392	173,107	186,156

GALILEO Usage	2009-2010	2010-2011	2011-2012	2012-2013	2013-2014
Searches	703,918	782,576	1,061,129	4,201,735	5,399,644
Articles	161,094	132,295	596,853	747,772	292,551

PERSONNEL DATA

FACULTY & STAFF

Human Resources

Full-Time Employees by Gender

Employee Category	Academic Year									
	2009-2010		2010-2011		2011-2012		2012-2013		2013-2014	
	M	F	M	F	M	F	M	F	M	F
Executive/Adm./Managerial	16	17	16	8	19	9	24	20	17	14
Faculty—9 month	51	60	73	51	54	78	55	79	55	69
Faculty—12 month	5	4	2	8	4	7	0	2	0	4
Professional Non-Faculty	15	30	35	24	18	49	21	44	35	49
Secretarial/Clerical	0	39	6	58	2	36	2	44	0	39
Technical/Paraprofessional	4	4	2	2	2	0	3	1	3	3
Skilled Craft	4	0	5	0	0	0	1	0	2	0
Service/Maintenance	10	8	18	10	19	10	30	9	29	10
TOTAL	105	162	157	161	118	189	136	199	141	188

Note: Beginning in 2012-2013, Executive/Admin/Managerial includes Academic Deans, Director of Libraries and Assoc. Director of Libraries. Librarians are reported in Professional Non-Faculty.

Full-Time Minority Employees

Employee Category	Academic Year				
	2009-2010	2010-2011	2011-2012	2012-2013	2013-2014
Executive/Adm./Managerial	3	3	3	3	1
Faculty—9 month	5	9	12	11	12
Faculty—12 month	0	0	0	0	0
Professional Non-Faculty	5	4	11	12	10
Secretarial/Clerical	1	7	3	5	5
Technical/Paraprofessional	2	1	1	1	1
Skilled Craft	0	0	0	0	0
Service/Maintenance	5	5	6	10	10
TOTAL	21	29	36	42	39

Full-Time Faculty Information

Full-Time Faculty by Gender

	Male		Female	
	Count	Percentage	Count	Percentage
Fall 2009	52	42.3%	71	57.7%
Fall 2010	54	40.6%	79	59.4%
Fall 2011	53	39.8%	80	60.2%
Fall 2012	55	40.4%	81	59.6%
Fall 2013	55	43.0%	73	57.0%

Full-Time Faculty by Race

	White (Non-Hispanic)		Hispanic		Black (Non-Hispanic)		Asian/ Pacific Islander	
	#	%	#	%	#	%	#	%
Fall 2009	116	94.4%	2	1.6%	2	1.6%	3	2.4%
Fall 2010	120	90.2%	2	1.5%	6	4.5%	5	3.8%
Fall 2011	121	91.0%	3	2.2%	7	5.3%	2	1.5%
Fall 2012	124	91.2%	2	1.5%	7	5.1%	3	2.2%
Fall 2013	116	90.6%	2	1.6%	7	5.5%	3	2.3%

Full-Time Faculty by Rank

	Professor		Associate Professor		Assistant Professor		Instructor		Lecturer	
	#	%	#	%	#	%	#	%	#	%
Fall 2009	18	14.6%	23	18.7%	33	26.8%	49	39.8%		
Fall 2010	16	12.0%	24	18.1%	35	26.3%	40	30.1%	18	13.5%
Fall 2011	14	10.5%	30	22.6%	36	27.1%	35	26.3%	18	13.5%
Fall 2012	16	11.8%	36	26.5%	41	30.1%	25	18.4%	18	13.2%
Fall 2013	18	14.0%	37	28.9%	40	31.3%	16	12.5%	17	13.3%

Full-Time Faculty by Tenure

	Tenured		Non-Tenured (On Tenure Track)		Non-Tenure Track	
	#	%	#	%	#	%
Fall 2009	40	32.5%	65	52.9%	18	14.6%
Fall 2010	47	35.3%	68	51.1%	18	13.5%
Fall 2011	48	36.1%	67	50.4%	18	13.5%
Fall 2012	55	40.4%	63	46.3%	18	13.2%
Fall 2013	58	45.3%	52	40.6%	18	14.1%

Full-Time Faculty by Degree

	Doctorate		Education Specialist		Master's		Baccalaureate	
	#	%	#	%	#	%	#	%
Fall 2009	33	26.8%	5	4.1%	84	68.3%	1	0.8%
Fall 2010	35	26.3%	4	3.0%	94	70.7%	0	0
Fall 2011	35	26.3%	4	3.0%	91	68.4%	3	2.3%
Fall 2012	37	27.2%	4	2.9%	91	67.0%	4	2.9%
Fall 2013	36	28.1%	3	2.3%	87	68.0%	2	1.6%

Full-Time Faculty by Average Salary

	Professor	Associate Professor	Assistant Professor	Instructor	Lecturer
Fall 2009	\$60,439	\$51,354	\$43,242	\$40,553	
Fall 2010	\$60,158	\$51,186	\$42,820	\$40,508	\$39,803
Fall 2011	\$60,892	\$48,203	\$41,844	\$40,854	\$40,296
Fall 2012	\$61,036	\$48,636	\$41,579	\$40,757	\$40,454
Fall 2013	\$60,196	\$46,635	\$41,634	\$43,113	\$40,364

Full-Time Faculty by Rank and Gender

	Professor		Associate Professor		Assistant Professor		Instructor		Lecturer	
	M	F	M	F	M	F	M	F	M	F
Fall 2009	12	6	6	17	14	19	20	29		
Fall 2010	10	6	6	18	15	20	17	23	6	12
Fall 2011	10	4	11	19	15	21	12	23	5	13
Fall 2012	12	4	12	24	19	22	7	18	5	13
Fall 2013	12	6	11	26	22	18	4	12	6	11

Part-Time Faculty Information

Part-Time Faculty by Rank

	Instructor		Assistant Professor		Associate Professor		Professor	
	#	%	#	%	#	%	#	%
Fall 2009	119	100%	-	-	-	-	-	-
Fall 2010	120	100%	-	-	-	-	-	-
Fall 2011	112	100%	-	-	-	-	-	-
Fall 2012	109	100%	-	-	-	-	-	-
Fall 2013	125	100%						

Part-Time Faculty by Gender

	Male		Female	
	Count	Percentage	Count	Percentage
Fall 2009	42	35.3%	77	64.7%
Fall 2010	49	40.8%	71	59.2%
Fall 2011	48	42.9%	64	57.1%
Fall 2012	38	34.9%	71	65.1%
Fall 2013	43	34.4%	82	65.6%

**ACADEMIC
SUCCESS
AND
eLEARNING**

Tutorial Center

The purpose of the Tutorial Center is to help students succeed in their chosen academic area by providing face-to-face and online tutoring. The Centers are located in the Georgia Highlands College Libraries on the Floyd Campus, Cartersville Campus, and Douglasville Campus, Norton Hall on the Marietta Campus, and in room 110 on the Paulding Campus. The schedules vary from campus to campus, and every effort is made to accommodate both day and evening students. The Centers have computers students can use for tutorial purposes, including practice in Reading, English, Math, and COMPASS, and to access textbook software and student email and D2L accounts. The Centers also sponsors various workshops covering such topics as term papers, calculators, and test-taking. In addition on-campus tutoring services, the Tutorial Center coordinates the use of Brainfuse, an online tutoring platform available to select students.

Tables below show the general statistics for the Tutorial Center. The numbers include student visits to the Centers, as well participants of workshops given by Center personnel. Through referrals and through drop-in students, the Center saw a variety of students representing different academic areas.

Tutorial Center Visits by Campus for Academic Year 2013-2014

Campus	Number of Visits
Floyd	2810
Cartersville	3271
Marietta	988
Paulding	2054
Douglasville	984
Online	521

Tutorial Center Visits by Academic Year

Academic Year	Number of Visits
2009-2010	7838
2010-2011	8651
2011-2012	10,017
2012-2013	9467
2013-2014	10,639

Assessment Center

The Assessment Center officially assumed standardized testing responsibility effective December 1997. In August 2005, a second Assessment Center was officially opened at the new Cartersville campus. The Floyd Center can accommodate thirty-seven students and the Cartersville Center can accommodate forty students for computerized or paper and pencil testing. In August 2009, a third Assessment Center coordinator was added to provide testing services at Paulding and Marietta. Testing began at the Douglasville campus October 2010. The Assessment Center Department underwent a name change to “Testing Services Department” in June 2013, and now consists of one Director, two Assistant Directors, and a number of Test Administrators and Test Proctors on each of five GHC campuses. This department is now located under the division of Academic Affairs on the organizational chart. The Testing Services Department creates and designs testing procedures and processes to ensure that testing services are provided at all GHC sites, and that the kinds of tests provided support the academic goals of the college. Amongst other duties, the department schedules tests, keeps records, and maintains professional contact with the Regent’s Testing Office and with other test providers.

Calendar Year 2013

	Cartersville	Marietta	Paulding	Floyd	Douglasville	TOTAL
Compass Placement (admission)	771	702	550	745	430	3198
Compass Exits (learning support)	266	155	161	165	121	868
CPE	0	0	0	0	0	0
Institutional SAT	13	4	2	15	1	35
Regents*	0	0	0	0	0	0
GHC Web/DVD (eLearning)	771	511	334	976	458	3050
Independent Study/Distance Learning (USG)	0	0	4	0	0	4
Independent Study/Distance Learning (non-USG)	2	2	4	0	0	8
Make-up Tests for Faculty	11	1	4	13	18	47
TOTAL STUDENTS TESTED	1834	1375	1059	1914	1028	7210
	25%	19%	15%	27%	14%	100%

GHC was granted exemption from Regents Testing following Spring 2010 testing.

Academic Advising

Academic Advising is a collaborative process between students and faculty or professional advisors. This teaching opportunity facilitates exploration of career and educational options and decision-making that will best lead to achievement of students' goals. There is an Advising Office on each GHC campus where students may meet with a Professional Advisor. Students can schedule an appointment or drop-in for assistance. Faculty advise at all sites. Each division assigns one or more faculty members as advising specialists who help coordinate academic involvement in advising.

Students may receive advising in person, via e-mail, phone, and chat service, and at every GHC site. Advising can occur at any time of the year but special times for advising are during orientation, registration, drop/add period, and Early Bird Advising.

Early Bird Advising

Early Bird Advising (EBA) takes place at mid-term of Fall and Spring semesters. During these specified times, students have the opportunity to work with a faculty advisor to build their long-term academic plan, as well as do short-term planning. The goal is to provide students with advice on how best to plan their academic careers. ScoreCard (GHC's DegreeWorks degree audit program) is used to show students what they need to complete their program or what will be needed if they change programs. Students can then make semester scheduling choices, as well as plan for graduation, transfer, and their professional career.

2521 students reported taking advantage of Early Bird Advising in 2013-2014. 77% of students surveyed reported that their experience was excellent or good. This year an enticement was put in place to draw students into EBA – early registration for those who attended EBA. Participation and satisfaction rates were higher than the previous three years combined. Participation was high on every campus.

Academic Intervention Program Initiative

The Academic Intervention Program (AIP) continued during 2013-2014. All students with a GPA of 2.0 or under were instructed to see a professional advisor on their campus and a 'real' hold that prevents registration was put on their record. During 2013-2014, 331 students and 5 professional advisors were involved in AIP. 85% of these students met with an advisor.

Early Warning Program

The Early Warning Program (EWP) initiative continued with faculty reporting student progress by mid-term. Emails are sent to students reported as making unsatisfactory course progress, asking them to meet with their professor and campus advisor. 2168 EWP emails were emailed to students in Fall 2013 and Spring 2014.

Ticketing System

Advising was added to the new GHC Ticketing System. Now, with the ticketing system, any inquiry to the advising address of advising@highlands.edu creates a "ticket," to which any professional advisor can respond. GHC411 "buttons" have been strategically placed on the GHC website, including one on the launch page of advising. During the 2013-2014 academic year, over 2950 advising tickets were answered.

New This Year

The **eScheduler** was introduced Fall 2013 and used to help students make Early Bird Advising appointments with faculty. This tool allows students to make and cancel appointments as needed, with both the student and faculty member receiving electronic confirmations. The eScheduler address is: wass.highlands.edu

Early Registration was introduced as a 'carrot' to get more students to see faculty advisors during Early Bird Advising. Reviews were mixed but largely positive, so early registration will continue in the fall and spring (for spring and fall terms only) for students who have the EBA note made in ScoreCard.

Orientation advising was changed for the fall 2014 orientations to allow for more one-on-one advising time between students and faculty advisors. Additionally, ScoreCard will be introduced and faculty academic presenters will be asked to discuss career options for their academic programs.

eLearning

What is eLearning at GHC?

The mission of eLearning at Georgia Highlands College is to provide electronically-based accredited courses and associated support services to GHC students to afford flexible access to GHC classes and programs of study. GHC eLearning provides students the opportunity to complete many of the first two years or "core" curriculum of their collegiate career in Web-based, DVD, or hybrid formats. This gives students the possibility of increased flexibility and convenience in course scheduling.

eLearning Classes Offered Academic Year 2013-2014

Web-based courses:

ACCT 2101: Principles of Accounting I
ACCT 2102: Principles of Accounting II
AHSC 1101: Medical Terminology
ARTS 1113: Art Appreciation
BIOL 2190: Principles of Nutrition
BUSA 2106: The Environment of Business
BUSA 2205: Fundamentals of Computer Application
COMM 1100: Human Communication
COMM 1101: Introduction to Mass Media
CRJU 1100: Introduction to Criminal Justice
CRJU 2311: Corrections
CRJU 2411: Criminology
CRJU 2701: Courts and Criminal Procedures
ECON 2105: Principles of Macroeconomics
EDUC 2110: Critical and Contemporary Education
EDUC 2120: Diversity in Education
EDUC 2130: Exploring Learning and Teaching
ENGL 1101: English Composition I
ENGL 1102: English Composition II
ENGL 2111: World Literature I
ENGL 2112: World Literature II
ENGL 2132: American Literature II
FCCS 1100: Freshman College Computer Studies
FCST 1010: The College Experience
FCST 1020: Career Choices and Decision Making
GHHU 2901: Georgia Highlands Humanities
2901: Special Topics
GHSS 2901: Georgia Highlands Social Sciences
2901: Special Topics
HIST 1112: World Civilization Since 1500
HIST 1121: Western Civilization I
HIST 1122: Western Civilization II
HIST 2111: American History I
HIST 2112: American History II
MATH 1111: College Algebra
MATH 1113: Precalculus
MATH 2200: Elementary Statistics
NURS 1103: Transition to Professional Nursing
NURS 1104: Professional Nursing for Paramedics

NURS 1152: Clinical Calculations
NURS 3300 Ethical Issues in Nursing
NURS 3301: Concepts of Professional Nursing
NURS 3302: Health Assessment
NURS 3303: Issues and Nursing Perspectives
NURS 3304: Foundations of Nursing Research
NURS 4401: Community Health Nursing
NURS 4402: Leadership and Management
PHED 1010: Concepts of Fitness/Health
PHED 1020: Cardiopulmonary Resuscitation
PHIL 2010: Introduction to Philosophy
POLS 1101: American Government
PSYC 1101: Introduction to General Psychology
PSYC 2103: Intro. to Human Development
RELI 1116: Intro. to Religion
SOCI 1101: Introductory Sociology
SOCI 1160: Introduction to Social Problems
SPAN 1001: Elementary Spanish I
SPAN 1002: Elementary Spanish II
SPAN 2001: Intermediate Spanish I
SPAN 2002: Intermediate Spanish II

Hybrid courses:

BIOL 1010K: Introductory Biology
BIOL 2154K: General Zoology
BUSA 2105: Communicating in Business
BUSA 2205: Fundamentals of Computer Application
COMM 1100: Human Communication
EDUC 2110: Critical and Contemporary Education
EDUC 2130: Exploring Learning and Teaching
ENGL 1102: English Composition II
ENGL 2122: British Literature II
FCCS 1100: Freshmen College Computer Studies
GEOL 1121K: Physical Geology
GEOL 1122K: Historical Geology
PHED 1010: Concepts of Fitness/Health

DVD courses:

HIST 2111: American History I
HIST 2112: American History II
MUSC 1100: Music Appreciation
SPAN 1001: Elementary Spanish I

eLearning Enrollment Academic Year 2013-2014

Course	Course Description	Sections Offered	Students Enrolled
DVD		9	239
HIST 2111	American History I	2	60
HIST 2112	American History II	2	60
MUSC 1100	Music Appreciation	2	54
SPAN 1001	Elementary Spanish I	3	65
Hybrid		17	293
BIOL 1010K	Foundations of Biology	2	41
BIOL 2154K	General Zoology	2	28
BUSA 2105	Communicating in Business	1	27
BUSA 2205	Fundamentals of Computer Application	1	11
COMM 1100	Human Communication	2	42
EDUC 2110	Critical and Contemporary Education	1	7
EDUC 2130	Exploring Learning & Teaching	1	24
ENGL 1102	English Composition II	1	24
ENGL 2122	British Literature II	1	21
FCCS 1100	Freshman College Computer Studies	2	34
GEOL 1121K	Physical Geology	1	9
GEOL 1122K	Historical Geology	1	14
PHED 1010	Concepts of Fitness/Health	1	11
Web		164	4379
ACCT 2101	Principles of Accounting I	1	28
ACCT 2102	Principles of Accounting II	1	30
AHSC 1101	Medical Terminology	4	186
ARTS 1113	Art Appreciation	5	148
BIOL 2190	Principles of Nutrition	7	201
BUSA 2106	The Environment of Business	4	121
BUSA 2205	Fundamentals of Computer Application	4	115
COMM 1100	Human Communication	7	133
COMM 1101	Introduction to Mass Media	1	21
CRJU 1100	Intro to Criminal Justice	2	64
CRJU 2311	Corrections	1	32
CRJU 2411	Criminology	2	59
CRJU 2701	Courts & Criminal Procedures	2	54
ECON 2105	Principles of Macroeconomics	4	121
EDUC 2110	Critical and Contemporary Education	2	61
EDUC 2120	Diversity in Education	2	61
EDUC 2130	Exploring Learning & Teaching	2	57

Course	Course Description	Sections Offered	Students Enrolled
ENGL 1101	English Composition I	7	165
ENGL 1102	English Composition II	8	193
ENGL 2111	World Literature I	1	27
ENGL 2112	World Literature II	4	114
ENGL 2132	American Literature II	2	57
FCCS 1100	Freshman College Computer Studies	10	240
FCST 1010	The College Experience	6	144
FCST 1020	Career Choices & Decision Making	3	68
GHHU 2901	Georgia Highlands Humanities 2901: Special Topics	1	25
GHSS 2901	Georgia Highlands Social Sciences 2901: Special Topics	1	16
HIST 1112	World Civ Since 1500	2	58
HIST 1121	Western Civilization I	2	59
HIST 1122	Western Civilization II	2	59
HIST 2111	American History I	2	64
HIST 2112	American History II	2	61
MATH 1111	College Algebra	3	76
MATH 1113	Precalculus	3	69
MATH 2200	Elementary Statistics	3	78
NURS 1103	Transition to Professional Nursing	1	9
NURS 1104	Prof. Nursing for Paramedics	1	6
NURS 1152	Clinical Calculations	2	96
NURS 3300	Ethical Issues in Nursing	2	13
NURS 3301	Concepts of Professional Nursing	1	33
NURS 3302	Health Assessment	1	33
NURS 3303	Issues and Nursing Perspectives	2	32
NURS 3304	Foundations of Nursing Research	1	26
NURS 4401	Community Health Nursing	1	20
NURS 4402	Leadership and Management	1	21
PHED 1010	Concepts of Fitness/Health	8	227
PHED 1020	Cardiopulmonary Resuscitation	4	100
PHIL 2010	Introduction to Philosophy	4	125
POLS 1101	American Government	4	119
PSYC 1101	Introduction to General Psychology	2	58
PSYC 2103	Intro to Human Development	4	121
COMM 1101	Introduction to Mass Media	1	21
CRJU 1100	Intro to Criminal Justice	2	64
CRJU 2311	Corrections	1	32
CRJU 2411	Criminology	2	59
RELI 1116	Intro to Religion	2	57
SOCI 1101	Introductory Sociology	2	64
SOCI 1160	Introduction to Social Problems	1	31

Course	Course Description	Sections Offered	Students Enrolled
SPAN 1001	Elementary Spanish I	2	48
SPAN 1002	Elementary Spanish II	2	48
SPAN 2001	Intermediate Spanish I	2	22
SPAN 2002	Intermediate Spanish II	1	5
Grand Total		190	4911

STUDENT AFFAIRS

Student Support Services 2013-2014

Student Support Services offers a variety of services, resources and activities designed to support student success. Services are designed to assist students with making decisions and adjusting to college life. Our goal is to promote personal growth and development. Currently enrolled students with career, educational and/or personal concerns may be seen by a professional staff member. Sessions are free and confidential. Counseling staff members are also available for consultation to students, faculty and staff of Georgia Highlands College who are concerned about specific situations.

Disability Population Accommodated at Georgia Highlands College

Persons who have a physical or mental impairment which substantially limits a major life activity are entitled to non-discrimination and reasonable accommodations.

Campus	Count of Students With Physical Disabilities Receiving Service	Count of Students With Learning Disabilities Receiving Service	TOTAL
Cartersville	18	80	98
Douglasville	0	6	6
Floyd/Heritage Hall	2	30	32
Paulding	1	27	28
Marietta	6	7	13
TOTAL	27	150	177

Counseling Services Provided at Georgia Highlands College

Through Counseling Services, we seek to maximize students' total learning experience through services that bolster their personal development, social adjustment and self-knowledge. Services include individual counseling provided by highly competent counseling professionals and educational outreach programs for the prevention of high risk behaviors. Licensed professional counselors are available on each campus.

Campus	Counseling Sessions Provided	Individual Students Served	Students Impacted through Outreach Events
Cartersville	321	75	505
Douglasville	170	31	213
Floyd/Heritage Hall	408	92	237
Paulding*	62	18	151
Marietta*	19	4	13
TOTAL	980	220	1119

*Data only available for Spring, Summer 2014

Workforce Investment Act (WIA) Services Provided

WIA is a federally funded program that prepares eligible adults and recently dislocated adults and workers for re-entry into the workforce through retraining and education. The WIA program at GHC provides a full range of services pertaining to employment, life skills training, education and more.

Campus	WIA Students Served
Cartersville	3
Douglasville	0
Floyd/Heritage Hall	50
Paulding	0
Marietta	1
TOTAL	54

Semester	In-Person Contacts for the WIA Offices
Summer 2013	157
Fall 2013	850
Spring 2014	725
TOTAL	1732

Office of Admissions, Registrar, and Financial Aid

The offices of Admissions, Registrar, and Financial Aid provide assistance to students from the moment a prospective student first contacts Georgia Highlands College through graduation. For 2011-2012, state and federal financial aid awards totaled \$13,605,126.55.

2012-2013 Summary of State Financial Aid Awards

State	Fall #	Fall Amount	Spring #	Spring Amount	Summer #	Summer Amount	Total Amount	Total #
GED	23	\$ 11,500.00	4	\$ 2,000.00	4	\$ 2,000.00	\$ 15,500.00	31
HERO	13	\$ 10,749.89	11	\$ 9,499.94	3	\$ 1,999.94	\$ 22,249.77	17
HOPE	911	\$ 681,571.84	845	\$ 641,014.72	263	\$ 109,021.71	\$ 1,431,608.27	2,019
HOPE-A	137	\$ 71,908.80	140	\$ 67,037.23	0	\$ -	\$ 138,946.03	277
LEAP	0	\$ -	0	\$ -	0	\$ -	\$ -	0
TOTAL	1084	\$ 775,730.53	1000	\$ 719,551.89	270	\$ 113,021.65	\$ 1,608,304.07	2344

2012-2013 Summary of Federal Financial Aid Awards

Federal	Fall #	Fall Amount	Spring #	Spring Amount	Summer #	Summer Amount	Total Amount	Total #
FWS	56	\$ 31,044.30	58	\$ 45,331.12	3	\$ 1,365.20	\$ 94,053.49	61
Pell	2852	\$ 5,623,964.41	2755	\$ 5,386,627.74	576	\$ 680,698.33	\$11,794,951.64	5213
SEOG	43	\$ -	109	\$ 53,881.00	0	\$ -	\$ 75,381.00	114
SUB	1627	\$ 2,765,232.00	1590	\$ 2,947,508.00	292	\$ 485,422.00	\$ 6,388,148.00	4954
Unsub	903	\$ 1,594,785.00	872	\$ 1,674,110.00	243	\$ 448,583.00	\$ 3,792,824.00	1359
TOTAL	5,481	\$ 7,249,793.71	5,581	\$10,107,458.00	1,114	\$ 1,616,069.00	\$11,794,951.64	11,701

Student Life

The Office of Student Life seeks to develop the Georgia Highlands College student body through a series of co-curricular activities that promote experiential learning, wellness, and appreciation of the arts, leadership and volunteerism. The unit encourages and provides student involvement opportunities to complement the academic programs of study and to enhance the overall college experience for all Georgia Highlands College students.

The Office of Student Life houses the offices for student publications, student governance, and the service learning and volunteer center. The OSL coordinates the forming of clubs and organizations by students and provides resources for those groups as they sponsor a wide variety of programs and events. The OSL also handles the student judicial process, new student orientation, schedules general entertainment events, and oversees the reservation and use of the Student Center and Solarium facilities.

Student Clubs and Organizations

	Floyd/ Heritage	Cartersville	Marietta	Paulding	Douglasville
Academic Departmental					
American Criminal Justice Association	X				
English Majors Association	X				
Highlands Association of Nursing Students	X				
Human Services Club	X				
Math and Science Club		X			X
Political Science Club	X				
Psychology Club		X			
The Political Club			X		
The Post-Raphaelites Art Club	X				
SADHA	X				
SPAGE	X				
Special Interests					
Active Minds		X			
Baptist Student Union	X				
Brother 2 Brother	X	X	X	X	X
Capture Highlands Photography Club	X				
Chargers Cheerleading Squad	X				
Circle K	X				
College Conservatives		X			
CRU		X			
Enactus			X		

	Floyd/ Heritage	Cartersville	Marietta	Paulding	Douglasville
Equality Alliance	X	X			
Gaming Club	X	X		X	X
GHC Endurance Sports Club		X			
Green Highlands	X	X		X	
Noise Society	X				
Physical Intramural Events (PIE)					X
Spanish Activities Club		X			
Students Without Borders	X	X		X	
Student Veterans of America	X	X		X	X
That Anime Club	X				
Treble Chargers	X				
Undergraduate Researches		X			
Woman to Woman			X		X
Writer's Collaborative	X				
Honor Groups					
Honors Program Club	X	X			X
Phi Theta Kappa (general)	X	X	X	X	X
Psi Beta (psychology)	X	X	X	X	X
Alpha Beta Gamma (business)	X	X	X	X	X
Publications					
Six Mile Post	X	X	X	X	X
Old Red Kimono	X	X	X	X	X
Leadership					
H.I.P (Highlands Interactive Productions)	X	X	X	X	X
Orientation Leaders	X	X	X	X	X
Emerging Leaders	X	X	X	X	X
Student Government Association	X	X	X	X	X

Intramural Sports Program

The intramural sports program aims at providing every student who wishes to participate an opportunity to engage in competitive sports activities. Competition in the team sports of flag football, basketball, soccer, softball, and volleyball are held seasonally for both men and women. Individual and dual sports such as tennis, golf, badminton, table tennis, billiards, canoeing, and bowling are offered throughout the academic year. Co-ed sports events are also held throughout the year.

Intramural Participation

Academic Year 2013-2014

Fall 2013	
3-3 Basketball	25
Flag Football (Co-ed)	32
Tennis Tournament	21
Turkey Day Walk-Run	27
Pool Tournament	19
TOTAL	124
Spring 2014	
5-5 Basketball	22
Pool Tournament	24
SMP/Intramural Ping Pong Tournament	16
Dodge Ball	18
TOTAL	80

All counts are weekly totals unless noted as a tournament

Athletics

The athletics program at Georgia Highlands College aims at providing eligible student-athletes with the opportunities to participate in intercollegiate sports. Currently, the program consists of men's and women's basketball, baseball, and softball. Additional sports may be added in the future. GHC is a Division I, Region 17 member of the National Junior College Athletic Association (NJCAA) and the Georgia Collegiate Athletic Association (GCAA), which consists of 21 member institutions.

2013-14 kicked off the inaugural season for the Georgia Highlands College softball and baseball teams.

Fall 2013-Spring 2014	
Men's Basketball	14 participants
Women's Basketball	12 participants
Baseball	20 participants
Softball	36 participants
TOTAL	82 participants

**INFORMATION
TECHNOLOGY
SERVICES**

Information Technology Services Division

The Information Technology Services (ITS) Division at Georgia Highlands College provides technological services that support the computing needs of the institution's academic and administrative functions. Directed by the Chief Information Officer, who reports to the president of the institution, the Information Technology Services Division is responsible for planning and coordinating all central enterprise computing equipment and systems, telecommunications systems, and all other computing equipment and resources on all Georgia Highlands College campuses. In addition, Information Technology Services is responsible for developing and maintaining the institution's Information Security Program.

Information Technology Services is responsible for the support of complex systems that provide delivery of a variety of electronic information. Using advanced technology to deliver high-speed connectivity to all campuses, ITS provides computer and technical support to all faculty, staff, and students. The Information Technology Services Division is comprised of four units that offer technical support in their respective areas of expertise. These units are represented or housed at different campuses depending upon a variety of strategic factors. These units are: Client Technology Services, Information Security & Network Services, Enterprise Application Services, and Audio Visual Services. These units work together to provide the best service and support to all end users of the institution. The Information Technology Services Division encourages all faculty, staff, and students to take advantage of the many technology resources and services available.

Client Technology Services

A unit of Information Technology Services

Client Technology Services (CTS), a unit of the Information Technology Services Division, serves as the primary user support for all students, faculty, and staff for all GHC campuses and locations. The mission of CTS is to provide our customers with quality and timely support of all hardware and specified pre-loaded software in a courteous, professional manner.

Primary Duties

- Provides hardware and software support for faculty and staff for all college owned desktops, laptops, printers, and related peripherals on all GHC campuses and locations.
- Provides hardware and software setup, maintenance and support of all college computer labs and clusters.
- Responsible for hardware distribution of all GHC desktop and laptop computers.
- Creates and distributes master software images to GHC computers.
- Responsible for bundling and distributing software updates and patches to all GHC computers.
- Installs, configures and maintains all new computers and peripherals for the college.
- Assist customers with account issues and Wi-Fi connectivity.
- Coordinates and assists with surplus process for all decommissioned GHC computers and peripherals.
- Maintains accurate inventory records for all GHC desktops, laptops and smart devices.
- Maintains appropriate documentation on policies, procedures, and forms relating to client support issues.
- Assists with basic wiring installation and repair.

Overview of Client Technology Services

In 2002, the Computer Services Department and the ITP Laptop Helpdesk, two separate technology units of the College, were combined to form the Information Technology Services Division. This merger resulted in the formation of Client Technology Services (CTS) as a new unit of the IT Division. CTS is responsible for all aspects of end-user computer hardware and software configuration, setup, maintenance and support at Georgia Highlands College. CTS maintains and supports over 1500 computers across seven different geographic locations. This fleet of computers includes 27 full computer labs, four testing centers, 115 classrooms, over 200 cluster computers, and over 450 employee computers.

Information Security & Network Services

A unit of Information Technology Services

Information Security & Network Services (ISNS), a unit of Information Technology Services, serves as the primary support for all network infrastructure, servers, web development, and information security services for all campuses. ISNS also supports the other divisions of Information Technology Services as needed.

Primary Duties

- Provides administration for all network-related infrastructure and servers.
- Creates, maintains and audits all accounts for all technology-related systems.
- Maintains documentation of systems, policies, standards, guidelines, and procedures.
- Maintains system backups, including off-site backups, for critical systems.
- Maintains telecommunications systems including phones and video conferencing systems.
- Maintains servers that control the physical security door access and video surveillance systems.
- Maintains the college website and develops web-based applications to support the user community.
- Investigates security breaches and incidents.
- Directs and maintains the institution's Information Security Program.

Overview of Information Security & Network Services

ISNS supports over 100 Windows, Linux and OS X servers on six campuses. The network consists of more than 1,500 connected nodes including computers, VoIP phones and other network-enabled devices. ISNS also develops and maintains the college website, consisting of a custom content management system and numerous web-based applications designed in-house to support various college divisions and back-end infrastructure management systems. We average more than 200,000 page visits per month, with over 2,000 pages of content within the CMS. ISNS also includes our Information Security team, responsible for directing and maintaining the college's Information Security Program. The Information Security Program ensures the appropriate physical, technical and administrative security controls are in place to protect the confidentiality, integrity and availability of the institution's information assets.

Enterprise Application Services

A unit of Information Technology Services

Enterprise Application Services (EAS), a unit of the Information Technology Services Division, serves as the primary support for all Enterprise based applications and interfaces.

Primary Duties

- EAS supports all GHC applications, some of which are listed below:
 - Primary Applications:
 - Ellucian Banner Student Information System
 - DegreeWorks
 - Raiser's Edge Alumni System
 - Third-party Application Support:
 - Touchnet
 - Higher One
 - ADP
 - Blackboard Datacard
 - Compass
 - Axiom High School Transcript and Admissions Application Downloads
 - UC4 Job Scheduler
 - VISTA – Course Management Software
 - PeopleSoft Financials
 - Follett Bookstore
 - Local Enhancements:
 - Online Advising
 - Orientation Registration
 - Admissions and Financial Aid Status Check
 - e-Learning Test Proctoring Registration System for Faculty & Students
- Provides design and development support for the creation of new applications and programs and for the redesign or enhancement of existing ones.
- Provides technical support for the design and development of applications that integrate with Enterprise applications.
- Provides faculty and staff support to assist departments in the daily use of Enterprise applications and/or interfaces.
- Investigates, evaluates, acquires, and promotes emerging technologies to support the enhancement of Enterprise applications.

Overview of Enterprise Application Services

EAS supports all GHC databases, all enterprise level applications such as, Ellucian's Banner Student Information System, DegreeWorks, Blackboard, ADP, and several local enhancements; all Oracle Databases and Web Service installations, configurations, and administrative services; all new enterprise application implementations; and overall support to faculty and staff of these systems. Investigates, evaluates, acquires, and promotes emerging technologies to support the enhancement of Enterprise applications.

EAS supports the mission of the college by providing technological services that support the computing needs of the institution's academic and administrative functions. Furthermore, the Division of EAS enhances the teaching and learning process for students, faculty and staff by researching, developing, implementing, and facilitating diverse and effective delivery systems through the use of new technologies.

Audio Visual Services

A unit of Information Technology Services

Audio Visual Services (AVS), a unit of the Information Technology Services Division, serves as the primary system of support for faculty and staff regarding all audiovisual equipment. In addition to support, AV is responsible for installation and maintenance of all audiovisual equipment.

Primary Duties

- Provides installation services for AV equipment in permanent and temporary locations.
- Provides maintenance and repair services for all campus AV equipment.
- Provides training for campus AV equipment.
- Provides “on-call” services for in-classroom troubleshooting with faculty and staff.
- Manages AVS portion of event functions held at the college for college usage as well as 3rd party community events and provides technical training for AV equipment needs/services.
- Manages and provides AV needs for graduations.

Overview of Audio Visual Services

AVS designs, updates, maintains and installs 118 audiovisual systems and four Collaborate video carts in classrooms, conference rooms, and auditoriums to accommodate the specific needs of each location. In addition, AVS is responsible for receiving all equipment, documenting and inventorying, and installation of equipment in appropriate locations. AVS also maintains an on-hand inventory for miscellaneous remote events requiring audiovisual systems. AVS sets up and runs the equipment for many of these events, such as speaking engagements and graduation ceremonies as well as the 3rd party community facilities usage. AVS is charged with ongoing maintenance and repair for all equipment to ensure all systems are current and operating effectively. AVS provides faculty support for all classroom systems as problems arise in the instructional area. Training is also provided as needed so that all faculty and staff understand the latest operating procedures for all audiovisual equipment.

**FINANCIAL
AND
PHYSICAL PLANT**

Financial Data

Distribution of Educational and General Revenue by Source (FY 2010—FY 2014)

Sources of Funds	2009-2010	2010-2011	2011-2012	2012-2013	2013-2014
Internal Revenue					
Student Tuition and Fees	\$9,140,240	\$9,555,701	\$14,188,016	\$13,160,076	\$10,256,541
Indirect Cost Recoveries	\$10,230	\$13,065	\$17,005	\$17,985	\$20,001
Sales and Services of:					
Educational Department	\$0	\$0	\$0	\$0	\$0
Other Sources	\$1,361,656	\$1,787,180	\$53,774	\$67,348	\$65,760
Technology Fees	\$613,073	\$616,564	\$718,786	\$633,090	\$610,153
Capital Outlay					
Transfer from Auxiliary Enterprises	1,417,553	\$645,081	\$662,201	\$861,000	\$1,166,831
Sub-Total Internal Revenue	\$12,542,752	\$12,617,591	\$15,639,782	\$14,739,499	\$12,119,286
State Appropriations	\$11,176,511	\$13,569,415	\$12,768,451	\$13,435,434	\$14,486,960
Stimulus Funds	\$2,346,123	\$0	\$0	\$0	\$0
Sub-Total Educational & General	\$26,065,386	\$26,187,006	\$28,408,233	\$28,174,933	\$26,606,246
Continuing Education Fees	\$157,767	\$182,326	\$160,245	\$111,426	\$159,746
Sponsored Operations	\$8,285,213	\$10,896,380	\$12,465,203	\$10,896,380	\$11,902,001
Total Educational & General	\$34,508,366	\$37,265,712	\$41,033,681	\$39,182,739	\$38,667,994

SOURCE: Office of Vice President for Finance and Administration.

Distribution of Educational and General Revenue by Source

Source of Funds		FY 2012-13	FY 2013-14
Instruction	Science ecore	\$22,302	\$30,693
	Course Fee - Science	\$108,340	\$122,231
	Course Fee - PE	\$12,487	\$16,383
	Distance Learning Fee	\$113,386	\$141,221
	Dental Hygiene Course Fee	\$4,772	\$3,803
	Foundation	\$1,645	\$2,206
	Dental Hygiene - Cleanings	\$53,310	\$56,390
	Garrett Lee Smith Youth Suicide	\$0	\$1,228
	Course Fee - Nursing	\$60,666	\$62,108
		TOTAL INSTRUCTION	\$376,909
General	Application Fees	\$124,093	\$152,661
	Tuition	\$10,214,736	\$10,256,541
	Institutional Fee	\$2,440,651	\$2,256,233
	Indirect	\$17,985	\$20,001
	Miscellaneous Revenue	\$46,789	\$65,610
	State Appropriation	\$13,435,434	\$14,486,960
		TOTAL GENERAL	\$26,279,688
Community Education	Cont. Ed - Dept.	\$111,426	\$159,746
		TOTAL COMMUNITY EDUCATION	\$111,426
Library	Library	\$377	\$377
		TOTAL LIBRARY	\$377
Ancillary Support	Community Outreach & Engagement	\$0	\$2,652
	Campus Admin Cartersville	\$1,763	\$0
		TOTAL ANCILLARY SUPPORT	\$1,763
Student Services	Workforce Investment Act	\$4,959	\$91,978
	African American Male Initiative	\$4	\$30,000
		TOTAL STUDENT SERVICES	\$4,962
Fiscal Operations	Bursar's Office Higher One Replacement Fee	\$11,223	\$9,262
		TOTAL FISCAL OPERATIONS	\$11,223
General Institutional	Facilities Usage	\$11,388	\$8,920
	Facilities AV Usage	\$2,650	\$450
		TOTAL GENERAL INSTITUTIONAL	\$14,038
Building Maintenance	Roof Replacement PE Bldg.	\$0	\$21,763
	Locker Room Renovation P1	\$0	\$22,816
		TOTAL BUILDING MAINTENANCE	\$0
Utilities	Utilities	\$0	\$73,173
		TOTAL UTILITIES	\$0
Plant Funds	Replace Boiler Physical Plant	\$0	\$24,010
	Cartersville Academic Ctr	\$0	\$318,611
	HVAC Repair	\$0	\$400
		TOTAL PLANT FUNDS	\$0
Equipment	Carpet in the A & AA hallways	\$11,188	\$0
	Cartersville Academic Ctr J206	\$307,801	\$367,677
	Floyd - Gym Roof Replacement	\$193,593	\$0
	Floyd-PE Building Roof Replacement	\$50	\$195,868
	Improve HVAC Inf - Library	\$80,341	\$0
	Install DDC Control - Walraven	\$15,000	\$0
	Renovate Classrooms, Walraven (J205)	\$92,715	\$0
	Replace Chiller - Heritage Hal	\$123,692	\$0

Source of Funds		FY 2012-13	FY 2013-14
	Replace Transformer Gym (J205)	\$27,497	\$0
	Replace Boiler - Physical Plant	\$0	\$2,373
	Generator Replacement Floyd	\$0	\$189,532
	HVAC Repair	\$0	\$13,326
	TOTAL EQUIPMENT	\$851,875	\$768,776
Technology	Technology	\$633,090	\$610,153
	TOTAL TECHNOLOGY	\$633,090	\$610,153
Endowment	GHC Endowment	\$577	\$818
Financial Aid Scholarships	Scholarships	\$12,466,795	\$11,775,771
	TOTAL SCHOLARSHIPS	\$12,467,373	\$11,776,589
Capital Outlay	Interest	\$9,125	\$9,228
	TOTAL CAPITAL OUTLAY	\$9,125	\$9,228
TOTAL EDUCATIONAL AND GENERAL		\$40,761,848	\$41,603,264
Intercollegiate Athletics	Baseball		\$19,352
	Women's Softball		\$11,525
	Men's Basketball		\$1,100
	Women's Basketball		\$600
	Athletics Administration	\$631,721	\$619,685
	TOTAL INTERCOLLEGIATE ATHLETICS	\$631,721	\$652,261
Cafeteria	Cafeteria	\$7,787	\$7,723
Stores & Shops	Bookstore	\$209,906	\$211,509
Campus Parking	Parking	\$109,862	\$109,038
Other Service Units	Vending	\$13,684	\$16,158
	Print Shop	\$21,953	\$20,522
	Card Services	\$317,449	\$302,415
	TOTAL AUXILIARY OPERATIONS	\$680,640	\$667,365
Student Activity Revenue	Student Activity Fee	\$480,587	\$461,981
	Six Mile Post	\$1,968	\$4,761
	Student Support Services Fee	\$1,259,683	\$1,222,658
	TOTAL STUDENT ACTIVITY REVENUE	\$1,742,238	\$1,689,400
TOTAL OTHER SOURCES		\$3,054,598.84	\$3,009,025.90
GRAND TOTAL		\$43,816,446.87	\$44,612,289.55

SOURCE: Office of Vice President for Finance and Administration.

Distribution of Funds		FY 2012-13	FY 2013-14
Instruction	Course Fee - Nursing	\$72,218	\$56,044
	Course Fee - PE	\$13,344	\$11,315
	Course Fee - Science	\$81,851	\$66,473
	Dental Hygiene - Cleanings	\$54,446	\$37,802
	Dental Hygiene	\$392,244	\$375,118
	Dental Hygiene Course Fee	\$3,397	\$3,630
	Digital Media Services/GHTV	\$123,817	\$89,644
	Distance Learning Fee	\$64,536	\$79,971
	Humanities	\$2,424,010	\$2,437,869
	Instr Resource Ctr	\$135,281	\$136,700
	Math	\$1,773,551	\$1,722,412
	Math & Science Partnership	\$11,278	\$0
	Completion Innovation Challenge	\$0	\$2,250
	NETF	\$186,586	\$162,631
	Nursing	\$1,614,167	\$1,691,967
	Stars grant	\$264	\$0
	Physical Education	\$549,226	\$574,025
	Nursing Grant	\$0	\$6,638
	Foundation Grant	\$240,003	\$120,375
	Garrett Lee Smith Youth Suicide Grant	\$0	\$1,228
	Science	\$1,979,454	\$2,099,041
	Social Sciences & Business	\$2,473,193	\$2,530,090
	Tutorial	\$236,296	\$237,793
	TOTAL INSTRUCTION	\$12,429,162	\$12,443,015
Community Education	Cont. Ed - Dept.	\$127,240	\$145,029
	TOTAL COMMUNITY EDUCATION	\$127,240	\$145,029
Remedial Instruction	Academic Support	\$713,718	\$690,928
	TOTAL REMEDIAL INSTRUCTION	\$713,718	\$ 690,928
Library	Library	\$1,072,264	\$1,102,689
	TOTAL LIBRARY	\$1,072,264	\$1,102,689
Ancillary Support	AV Services	\$147,820	\$146,391
	Advising Center	\$269,909	\$329,206
	Assessment	\$208,515	\$202,022
	Community Outreach Engagement	\$56,896	\$116,630
	eLearning	\$74,899	\$114,826
	First Year Experience	\$63,372	\$3,324
	TOTAL ANCILLARY SUPPORT	\$821,410	\$912,400
Academic Administration	Diversity	\$3,281	\$10,635
	Honors	\$2,469	\$9,560
	SPAA	\$83,071	\$58,807
	Study Abroad	\$9,339	\$8,471
	VP Academic Affairs & Student	\$296,534	\$295,725
	TOTAL ACADEMIC ADMINISTRATION	\$394,695	\$383,199
Student Services	Floyd Administration	\$463,419	\$428,043
	Campus Admin-Cartersville	\$442,245	\$350,487
	Campus Admin-Marietta	\$599,168	\$544,721
	Douglas Instructional Site	\$811,096	\$733,323

Distribution of Funds		FY 2012-13	FY 2013-14
	Paulding Instructional Site	\$291,276	\$262,873
	African American Male Initiative	\$37,052	\$30,000
	Student Support Services	\$41,987	\$219,106
	Financial Aid	\$402,178	\$427,050
	Application Fees	\$83,837	\$84,581
	Workforce Investment Act	\$87,045	\$91,978
	Graduation Fees	\$9,347	\$0
	GHC Transcripts	\$6,054	\$5,886
	Registrar	\$371,095	\$387,958
	TOTAL STUDENT SERVICES	\$3,645,799	\$3,566,004
Executive Management	Advancement	\$172,841	\$260,196
	Human Resources	\$394,079	\$339,994
	Internal Audit	\$38,667	\$52,785
	President	\$303,628	\$302,990
	TOTAL EXECUTIVE MANAGEMENT	\$909,214	\$955,964
Fiscal Operations	Accounting Office	\$140,803	\$137,343
	Budget Office	\$57,331	\$12,046
	Bursar Office	\$208,264	\$214,173
	Director of Accounting Office	\$160,766	\$167,247
	VP Finance & Administration	\$212,233	\$220,530
	Procurement	\$62,039	\$66,451
	TOTAL FISCAL OPERATIONS	\$841,436	\$817,790
Administrative Computing Support	Information Technology	\$1,311,347	\$1,333,938
	IT/Tech Fee	\$675,432	\$609,033
	TOTAL ADMINISTRATIVE COMPUTING SUPPORT	\$1,986,779	\$1,942,971
Public Relations	College Relations Office	\$173,834	\$178,293
	Mail Room	\$7,726	\$7,983
	Marketing/Recruitment	\$45,506	\$87,892
	TOTAL PUBLIC RELATIONS	\$227,066	\$274,168
General Institutional	College Contingency	\$0	\$983,071
	Facilities Usage	\$20,695	\$18,696
	Facility AV Usage	\$6,873	\$3,100
	Gen Institutional	\$74,201	\$68,341
	Gen Institutional - IT	\$429,888	\$405,063
	Gen Institutional - Telecom	\$191,741	\$160,407
	Staff Benefits	\$745,709	\$752,644
	TOTAL GENERAL INSTITUTIONAL	\$1,469,108	\$2,391,322
Physical Plant Administration	Plant Administration	\$203,721	\$243,124
	TOTAL PHYSICAL PLANT ADMINISTRATION	\$203,721	\$243,124
Building Maintenance	Bldg Maintenance	\$798,592	\$775,234
	Carpet in the A & AA hallway	\$11,188	\$0
	Locker Room Renovation - P1	\$0	\$20,443
	Roof Replacement - PE Bldg E	\$193,643	\$217,631
	TOTAL BUILDING MAINTENANCE	\$1,003,423	\$1,013,308
Custodial Services	Custodial Services	\$576,464	\$550,825
	TOTAL CUSTODIAL SERVICES	\$576,464	\$550,825
Utilities	Utilities	\$1,146,255	\$1,095,358
	TOTAL UTILITIES	\$1,146,255	\$1,095,358

Distribution of Funds		FY 2012-13	FY 2013-14
Landscape and Grounds Maintenance	Grounds	\$279,548	\$247,034
	Cartersville Academic Ctr J206	\$307,801	\$686,289
	Install DDC Control - Walraven	\$15,000	\$0
	Renovate Classrms, Wal (J205)	\$92,714	\$0
	Replace Chiller - Heritage Hal	\$123,692	\$0
	Replace Transformer Gym (J205)	\$27,497	\$0
	HVAC Repair	\$80,341	\$17,325
	Replace Boiler - Physical Plnt	\$0	\$26,383
	TOTAL LANDSCAPE AND GROUNDS MAINTENANCE	\$926,591	\$977,031
Equipment	Generator Replacement Floyd	\$0	\$189,532
	TOTAL EQUIPMENT	0	\$189,532
Safety and Security	Campus Safety	\$427,942	\$441,294
	TOTAL SAFETY AND SECURITY	\$427,942	\$441,294
Scholarships	Unassigned Balance	\$12,014,048	\$11,633,100
	Foundation Scholarships	\$64,908	\$70,296
	TOTAL SCHOLARSHIPS	\$12,078,955	\$11,703,396
TOTAL EDUCATIONAL AND GENERAL		\$41,001,243	\$41,839,346
Student Activities Program	Intramurals	\$19,636	\$19,001
	Entertainment	\$33,389	\$40,717
	Student Government	\$2,114	\$1,616
	Old Red Kimono	\$7,829	\$7,765
	Six Mile Post	\$30,105	\$31,098
	Six Mile Post-Ad Sales	\$2,861	\$4,715
	Active Minds	\$0	\$65
	Alabama Shakespeare Festival	\$2,958	\$2,200
	Association Fees & Licensing	\$3,660	\$1,234
	Brother 2 Brother	\$5,745	\$5,579
	Chargers Raising Colts	\$83	\$0
	CRU	\$196	\$415
	Divisional Proposals	\$1,883	\$964
	Gaming Club	\$4,015	\$4,369
	GLBTSA Student Organization	\$464	\$1,467
	Graduation	\$9,762	\$3,087
	Green Highlands	\$6,298	\$4,640
	Highlands Assoc. Nursing	\$2,034	\$2,028
	Honors Assembly	\$2,964	\$3,542
	Honors Club	\$645	\$1,490
	Leadership	\$7,521	\$3,063
	Math & Science Club	\$2,499	\$1,099
	Orientation	\$22,877	\$9,044
	Phi Theta Kappa	\$4,857	\$5,956
	Political Science Club	\$663	\$1,000
	Psi Beta	\$345	\$295
	Psychology Club	\$0	\$180
	SIFE Club	\$837	\$999
	Spanish Club	\$224	\$881
	Special Projects	\$38,487	\$0

Distribution of Funds		FY 2012-13	FY 2013-14
	Student Center - PPV	\$286,908	\$343,935
	Student Life - Contingency	\$4,806	\$287
	Student Life - Douglasville	\$48,660	\$48,783
	Student Life - Marietta	\$58,774	\$56,755
	Student Life - Paulding	\$6,303	\$8,642
	Student Life - Rome	\$97,657	\$95,676
	Student Life-Cartersville	\$74,292	\$70,635
	Student Support Services Fee	\$826,707	\$1,349,153
	Student Veterans of America	\$1,998	\$1,131
	Students Without Borders	\$1,807	\$2,548
	That Anime Club	\$1,845	\$1,613
	Undergrad Researchers	\$2,030	\$1,036
	Woman to Woman - Douglasville	\$0	\$629
	Women 2 Women - Marietta	\$1,786	\$533
	Writers Collaborative	\$550	\$0
	TOTAL STUDENT ACTIVITIES PROGRAM	\$1,629,072	\$2,139,862
Campus Parking	Campus Parking	\$114,208	\$75,358
	TOTAL CAMPUS PARKING	\$114,208	\$75,358
Cafeteria	Cafeteria	\$2,154	\$50,004
	TOTAL CAFETERIA	\$ 2,154	\$50,004
Stores and Shops		\$137,668	\$29,327
	TOTAL STORES AND SHOPS	\$137,668	\$29,327
Other Service Units	Data Card Center	\$381,012	\$289,434
	Director of Auxiliary Services	\$2,818	\$110,011
	Print Shop	\$21,954	\$17,226
	Vending	\$14,739	\$887
	TOTAL OTHER SERVICE UNITS	\$420,524	\$417,558
Intercollegiate Athletics	Athletics Administration	\$261,226	\$174,783
	Baseball	\$4,341	\$179,998
	Men's Basketball	\$103,210	\$137,573
	Softball	\$10,859	\$163,653
	Women's Basketball	\$185,017	\$182,858
	TOTAL INTERCOLLEGIATE ATHLETICS	\$564,653	\$838,866
TOTAL OTHER SOURCES		\$2,868,278.03	\$3,550,974.79
GRAND TOTAL		\$43,869,520.61	\$45,390,320.31

SOURCE: Office of Vice President for Finance and Administration.

Physical Plant Data

The mission of the Physical Plant is to arrange functional resources in a way that permits the college organization to effectively and efficiently deliver services in support of the overall mission of the institution. Physical Plant has a mission and function that relates to virtually all other departments of the institution to insure a safe, clean and pleasing environment for students and employees.

In support of the mission for Georgia Highlands College, the Physical Plant Department may be linked to the following sections:

- Provide physical and technical support to the expansion of the institution's geographical area
- Provide physical and environmental support for the well-being of students, faculty and the community
- A supportive campus climate, with necessary services to meet the needs of students, faculty and staff
- A commitment to teaching/learning environment, both inside and outside the classroom, that sustains instructional excellence, functions to provide University System access to a diverse student body and promote high levels of student learning.

In support of Georgia Highlands College goals, the Physical Plant department may be linked to the following sections:

- Renovate selected facilities and demonstrate progress on future construction projects
- Administer support services.

Unit Operations

The Physical Plant operation provides the services that are necessary for the day-to-day operation of the college's business. Through the function of facilities management, custodial, grounds, carpentry and mechanical personnel, Plant Operations can assure faculty, staff and students, a conducive environment for teaching and learning. Plant Operations supports the mission and goals of the college by fulfilling this vital component of the college's business in an efficient and timely manner.

Campus Facilities

Floyd Campus

Building code	Building letter	Building name	Date built or acquisitioned	Gross sq. feet
1	A	Administration Building	1970	18,646
2	W	Walraven Building	1970	57,523
3	L	Library	1975	28,509
4	D	Old P.E.	1970	12,200
5	E	Maintenance	1970	7,713
6	F	Classroom Building	1974	28,040
7	G	Physical Plant Warehouse and Garage	1974	6,215
8	D	Gym and PE classrooms	1980	29,511
33	I	Lakeview Building and Auditorium	1999	27,166
11	AA	Administrative Annex	1991	13,418
12	S	Solarium	1994	1,920
17	Q	Greenhouse	1973	576
34	N/A	RESA Building		12,578
27	Z	Astronomy Classroom	1997	1,733
28	Z	Telescope Lab	1997	448
32	F	Addition to F-Wing	1999	6,417
		Total		252,613

Heritage Hall Site

Building code	Building letter	Building name	Date built or acquisitioned	Gross sq. feet
14	H	Heritage Hall Main Building	1994	53,140
16	P	Heritage Hall Annex	1994	8,490
		Total		61,630

Cartersville Campus

Building code	Building letter	Building name	Date built or acquisitioned	Gross sq. feet
20	N/A	Cartersville Campus	2005	130,787
22	N/A	Cartersville Student Center	2012	56,646
		Total		187,433

Paulding Site

Building code	Building letter	Building name	Date built or acquisitioned	Gross sq. feet
35	N/A	Bagby Building	2009	30,800
36	N/A	Winn Building	2009	10,498
		Total		41,298

Douglasville Site

Building code	Building letter	Building name	Date built or acquisitioned	Gross sq. feet
38	N/A	Douglasville Site	2010	35,330
		Total		35,330

Total Square Footage for All Campuses:

578,304

Campus Safety Data

The Office of Campus Safety is located in the Administrative building on the Floyd campus. Offices are also located at Cartersville, Douglasville, Paulding, and Heritage Hall for your convenience. Professional Safety Officers are on duty during normal operating hours at each campus location. These officers provide physical security, fire protection and prevention, emergency first aid, safety programs, parking and traffic services, and fire inspections, as well as investigate violations of the Code of Student Conduct and criminal offenses on GHC property.

Total Criminal Offenses on Campus by Calendar Year

Offense	2009	2010	2011	2012	2013
Murder	0	0	0	0	0
Negligent Manslaughter	0	0	0	0	0
Sex Offenses	0	0	0	0	0
Robbery	0	0	0	0	0
Aggravated Assault	0	0	0	0	0
Burglary	0	0	0	0	0
Arson	0	0	0	0	0
Motor Vehicle Theft	0	0	0	0	0

Source: GHC Campus Safety Office

If you have a campus emergency, please call (706) 252-4813.