



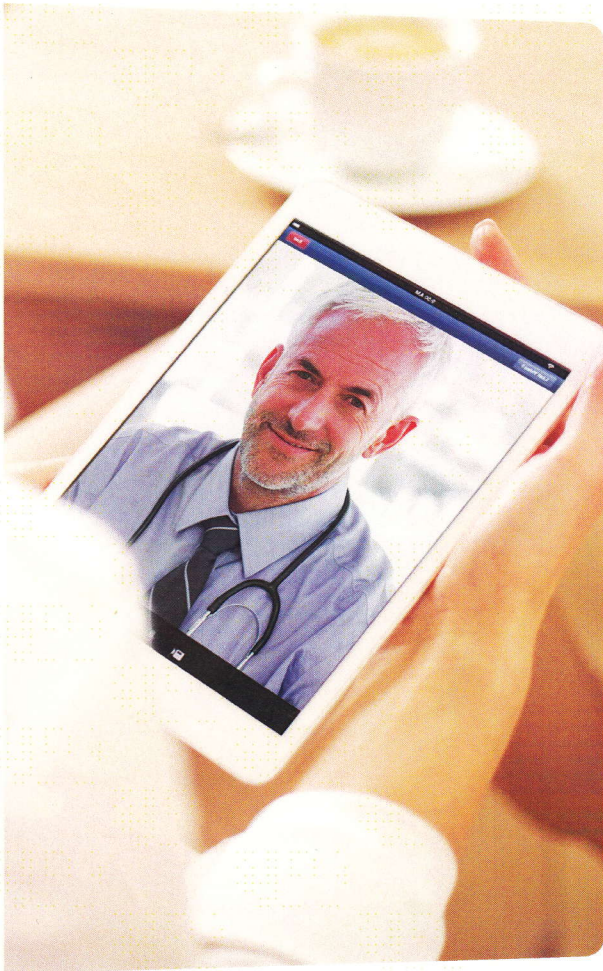
**BlueCross BlueShield**  
of Georgia

**LiveHealth**  
ONLINE

University System of Georgia Benefits



we provide · you decide



# Life doesn't wait for you to feel better

## LiveHealth Online is a new benefit for you and your family

When you or a family member are feeling under the weather, life doesn't wait for you to feel better. Good news is, with LiveHealth Online, you get medical care right when you need it. No appointments, no driving and no waiting at an urgent care center.

LiveHealth Online lets you talk face-to-face with a doctor through your mobile device or a computer with a webcam. Use LiveHealth Online for common health concerns like colds, the flu, fevers, rashes, infections, and allergies. It's faster, easier and more convenient than a visit to an urgent care center.

LiveHealth Online gives you peace of mind with:

- Immediate access to your choice of doctors 24/7.
- Secure and private video chats with board-certified doctors.
- Prescriptions sent directly to your pharmacy, if needed.

With a doctor on call anytime, anywhere, you can get the care you need, without missing a single important moment of life. All BCBSGa Comprehensive Care and Consumer Choice HSA healthcare plan members will be able to use LiveHealth Online beginning January 2016.

Beginning January 2016 members can download the app to your mobile device and complete the About You page. Or go to [livehealthonline.com](http://livehealthonline.com) on your computer to sign up.



apple.com



play.google.com/store

LiveHealth Online is only available to residents of certain states. Visit [livehealthonline.com](http://livehealthonline.com) to find out where the service is currently available.

LiveHealth Online is the trade name of Health Management Corporation, a separate company providing telehealth services on behalf of Blue Cross and Blue Shield of Georgia.

Blue Cross and Blue Shield of Georgia, Inc. and Blue Cross Blue Shield Healthcare Plan of Georgia, Inc. are independent licensees of the Blue Cross and Blue Shield Association. The Blue Cross and Blue Shield names and symbols are registered marks of the Blue Cross and Blue Shield Association.

55428GAMENBGA 08/15

- **Comprehensive Care Plan** – Plan pays 100% after \$15 copayment
- **Consumer Choice HSA** – Member cost share is less than a typical Primary Care Physician office visit (subject to deductible/coinsurance)

\* Your non-covered family members and friends can also use LiveHealth Online by paying the full cost of the visit, \$49. LiveHealth Online is not available to BlueChoice HMO plan members because of Primary Care Physician referral requirements.